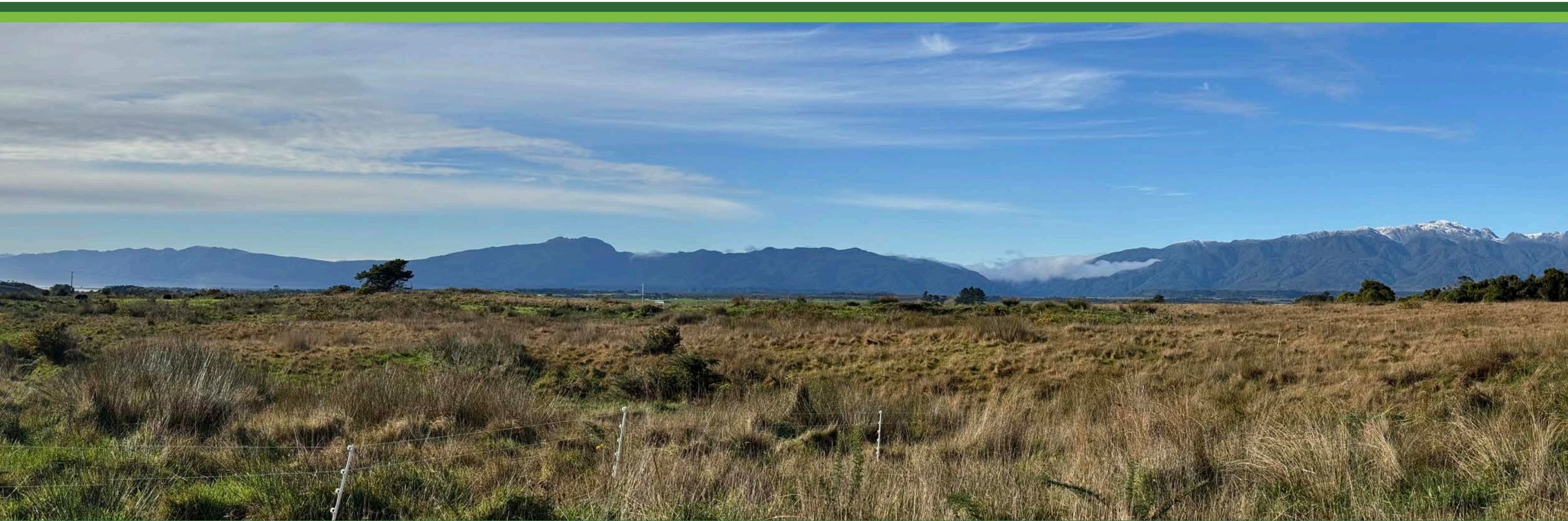


CAPE FOULWIND, WEST COAST



Landscape Assessment

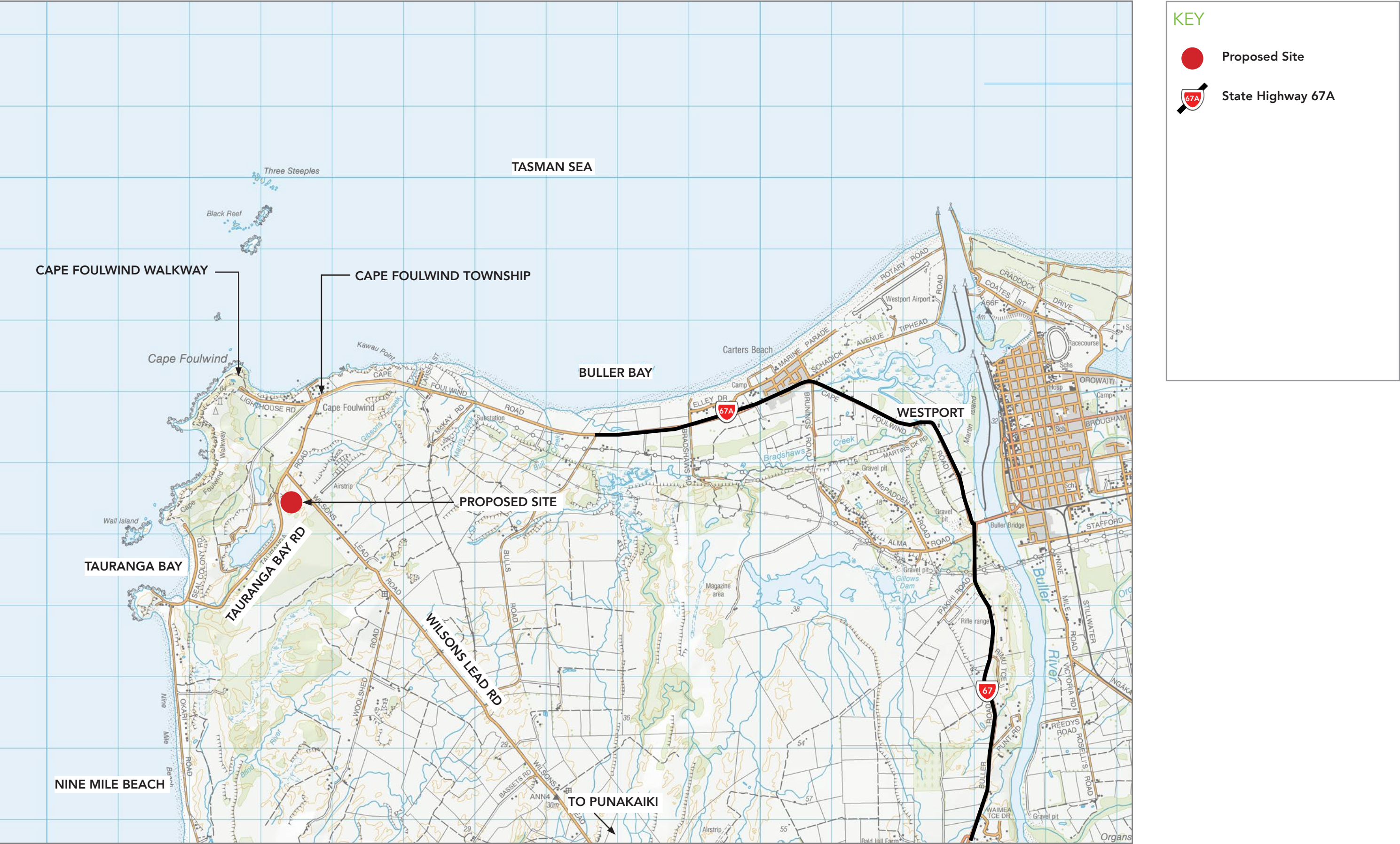
Graphic Supplement

August 2025

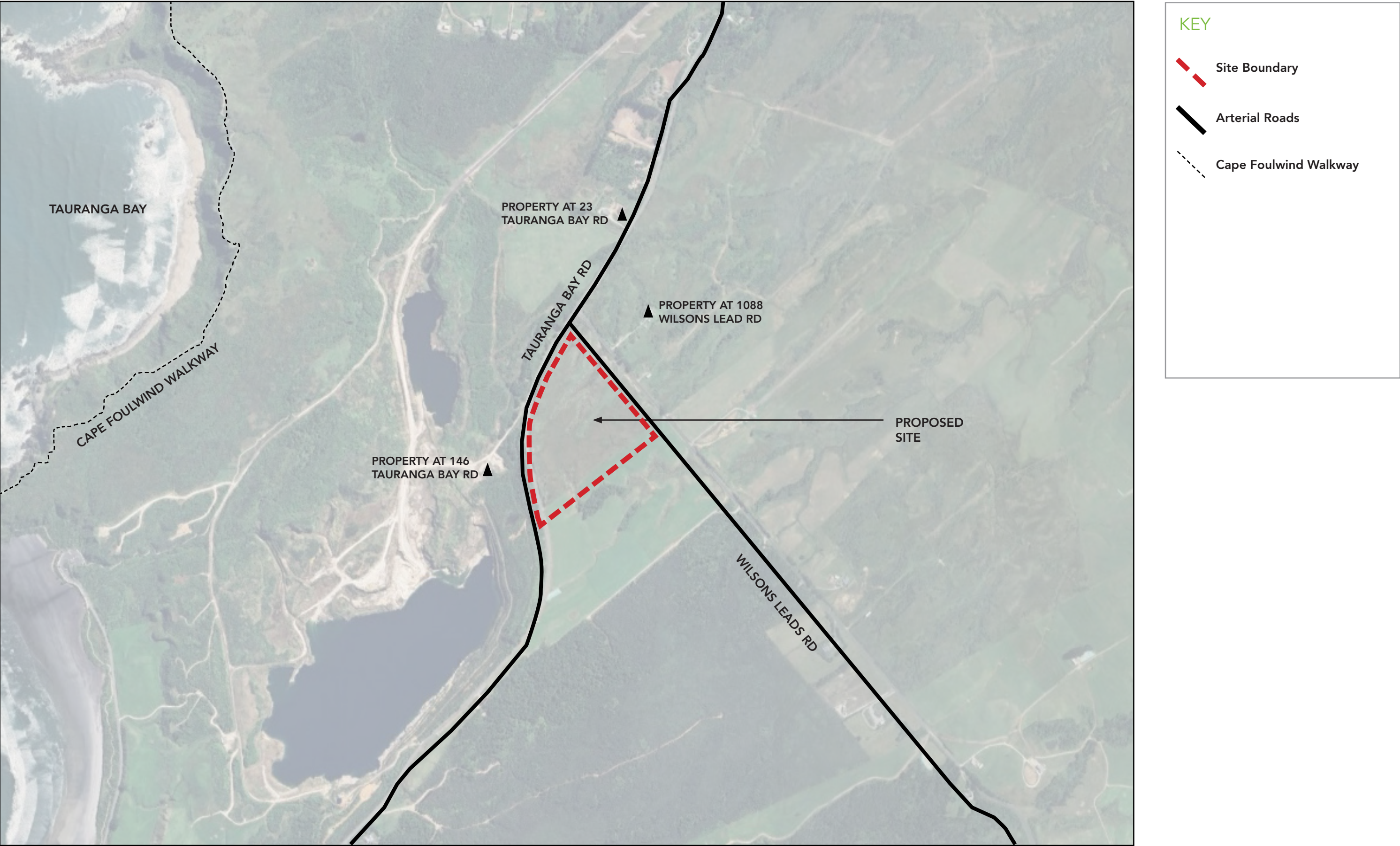
CONTENTS

1.0 WIDER CONTEXT PLAN	3
2.0 SITE LOCATION PLAN	4
3.0 PROPOSED OVERALL SITE PLAN	5
3.1 PROPOSED SUBDIVISION PLANS	6
4.0 OPERATIVE BULLER DISTRICT PLAN ZONING	7
5.0 PROPOSED TE TAI O POUTINI PLAN	8
6.0 PUBLIC CONSERVATION AREAS, SCENIC RESERVES AND WALKWAYS	9
7.0 CHARACTER VIEWS PLAN	10
CHARACTER VIEWS 1-3	11-12
8.0 VIEWPOINTS PLAN	13
VIEWPOINTS 1-8	14-17
9.0 LANDSCAPE MITIGATION PLAN	18
10.0 PLANT SPECIES PALETTE	19

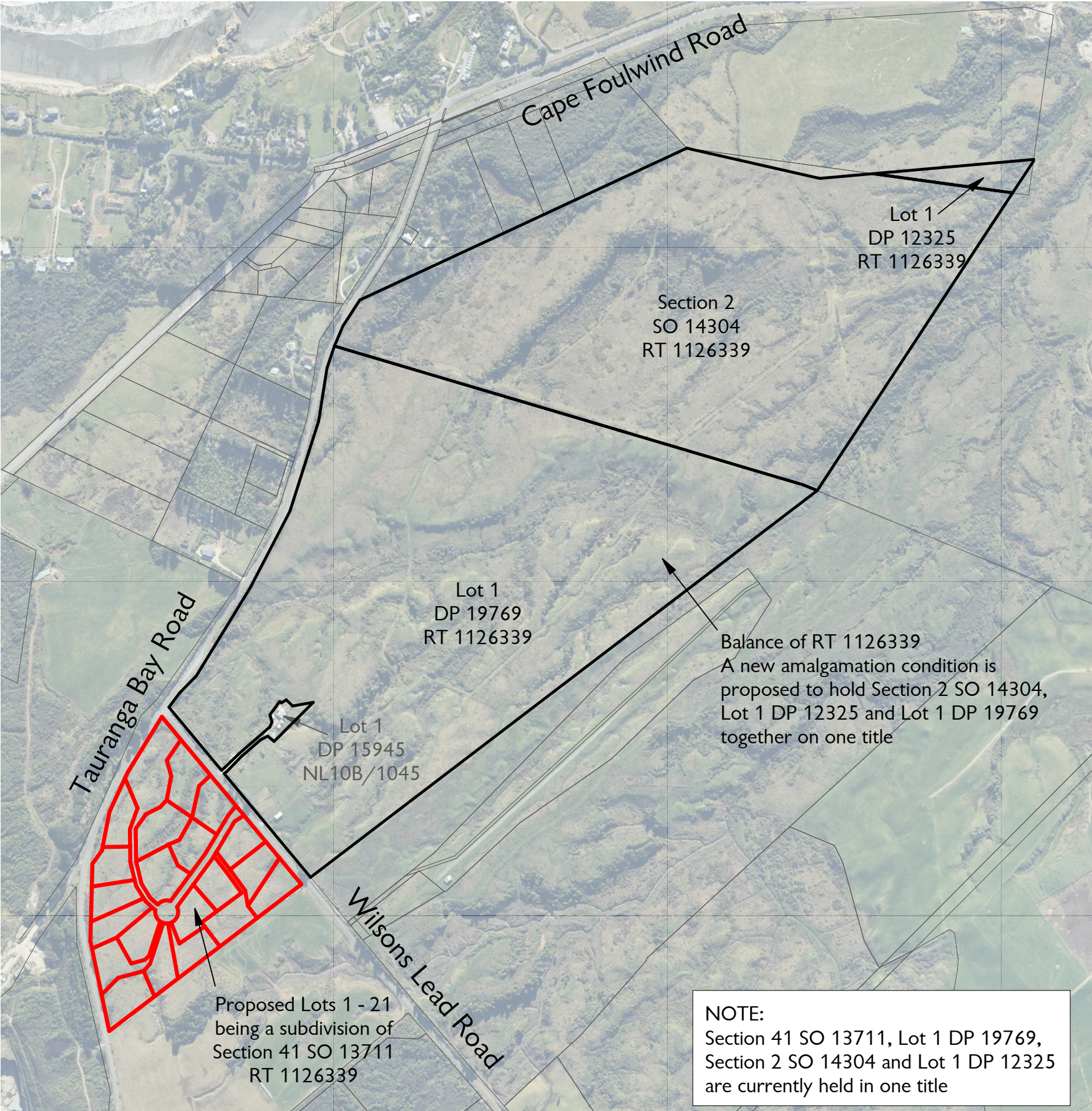
1.0 WIDER CONTEXT PLAN



2.0 SITE LOCATION PLAN



3.0 PROPOSED OVERALL SITE PLAN

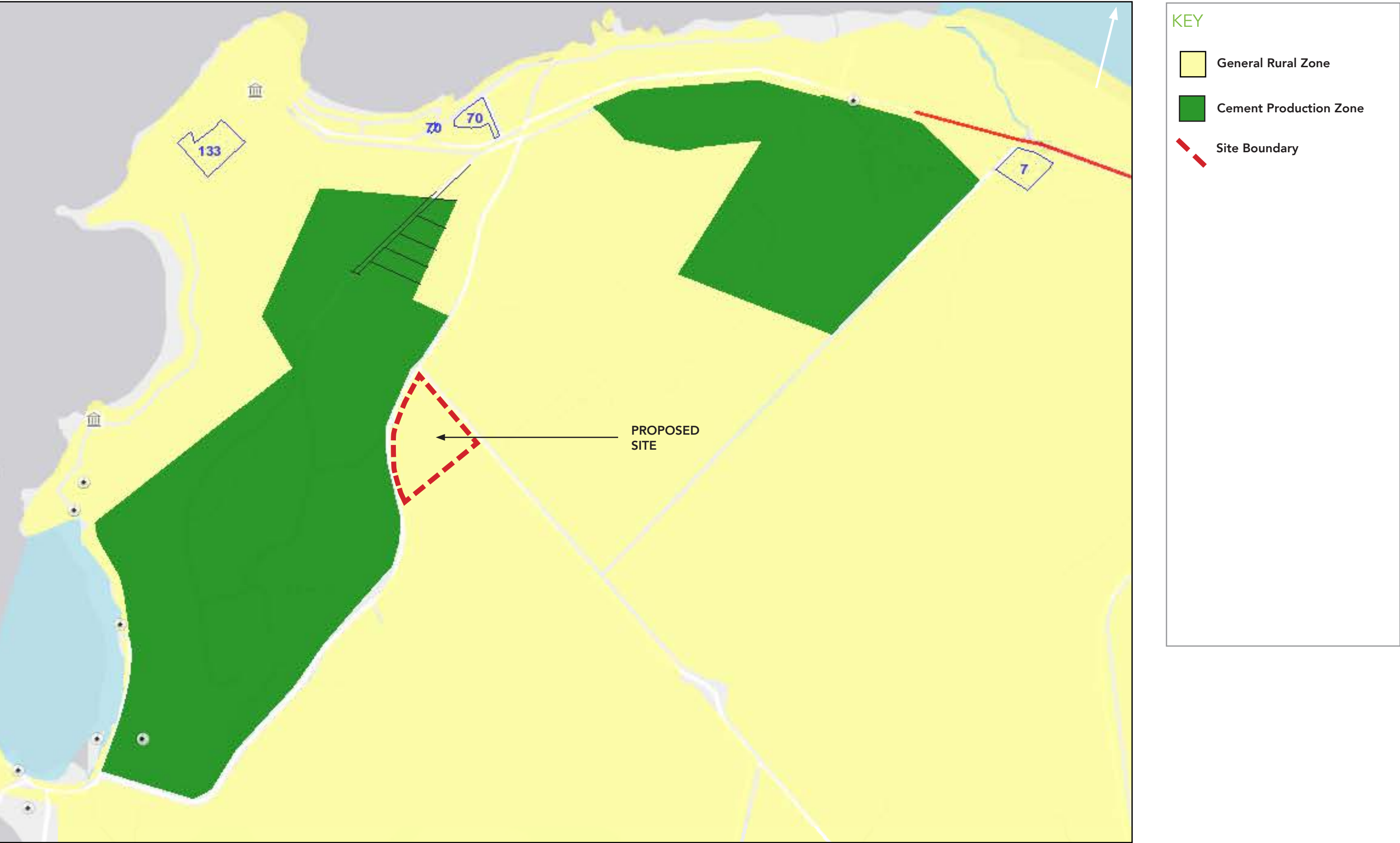


NOTE: Plans received from Elliot Sinclair.

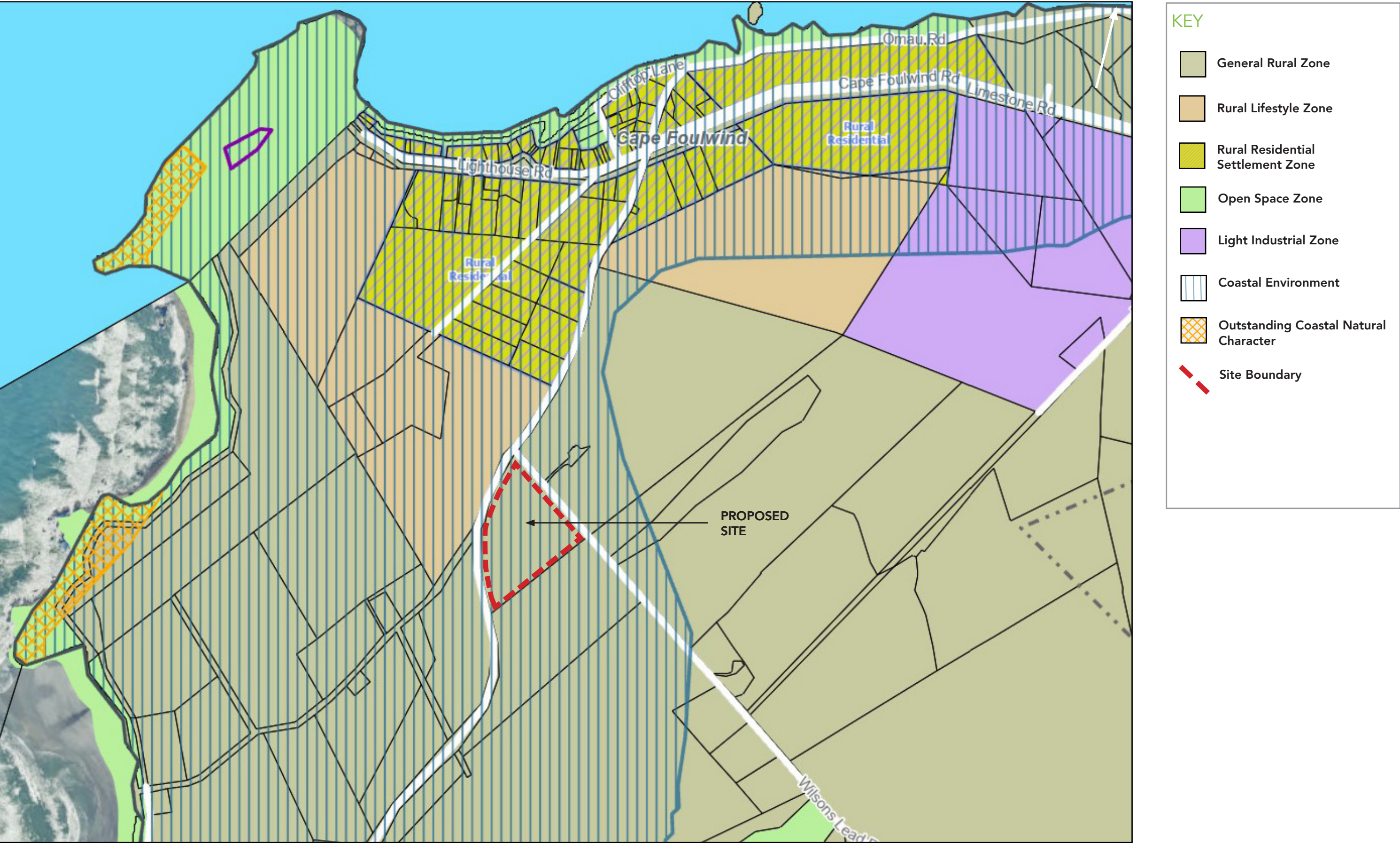
NOTE: Plans received from Elliot Sinclair.



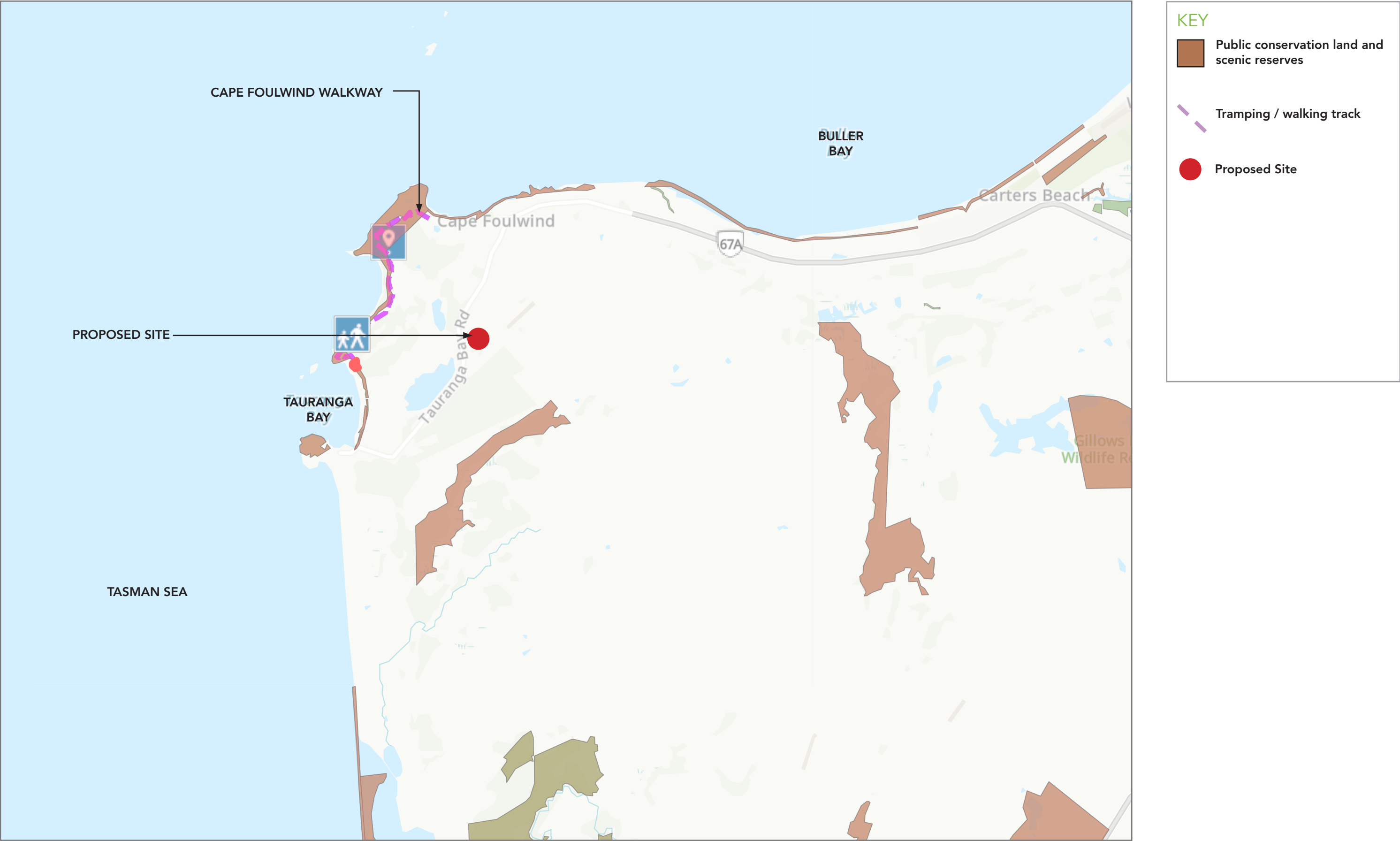
4.0 OPERATIVE BULLER DISTRICT PLAN ZONING



5.0 PROPOSED TE TAI O POUTINI PLAN



6.0 PUBLIC CONSERVATION AREAS, SCENIC RESERVES AND WALKWAYS



7.0 CHARACTER VIEWS PLAN



KEY:

 Private Viewpoint

GPS CO-ORDINATES:

Private viewpoint 1: 171°47'91.11"E
41°76'16.72"S

Private viewpoint 2: 171°47'59.52"E
41°76'32.25"S

Private viewpoint 3: 171°47'53.11"E
41°76'16.41"S

GPS CO-ORDINATES
DISTANCES FROM SITE:

Private viewpoint 1: 0.00km
Private viewpoint 2: 0.00km
Private viewpoint 3: 0.00km

CHARACTER VIEW 1.0: EXISTING SITE



Character View 1: Panoramic view from within the site. The viewpoint is looking in a south-westerly direction. Taken with a Canon 600D camera with a 50mm lens. This is not a public viewpoint. A1 size prints should be viewed at approx. 500mm distance from eye level (recommended), A3 size prints should be viewed at approx. 250mm.

CHARACTER VIEW 2.0: EXISTING SITE



Character View 2: Panoramic view from within the site. The viewpoint is looking in a north-easterly direction. Taken with a Canon 600D camera with a 50mm lens. This is not a public viewpoint. A1 size prints should be viewed at approx. 500mm distance from eye level (recommended), A3 size prints should be viewed at approx. 250mm.

CHARACTER VIEW 3.0: EXISTING SITE




Character View 3: Panoramic view from within the site. The viewpoint is looking in an eastern direction. Taken with a Canon 600D camera with a 50mm lens. This is not a public viewpoint. A1 size prints should be viewed at approx. 500mm distance from eye level (recommended), A3 size prints should be viewed at approx. 250mm.

8.0 VIEWPOINTS PLAN



KEY:



Public Viewpoint

GPS CO-ORDINATES:

- Public viewpoint 1: 171°48'04.52"E
41°76'23.65"S
- Public viewpoint 2: 171°47'86.83"E
41°76'07.58"S
- Public viewpoint 3: 171°47'77.79"E
41°75'99.94"S
- Public viewpoint 4: 171°47'69.58"E
41°75'93.38"S
- Public viewpoint 5: 171°47'66.83"E
41°75'89.30"S
- Public viewpoint 6: 171°47'48.52"E
41°76'13.30"S
- Public viewpoint 7: 171°47'53.72"E
41°76'41.91"S
- Public viewpoint 8: 171°47'56.00"E
41°76'53.66"S

GPS CO-ORDINATES
DISTANCES FROM SITE:

- Public viewpoint 1: 0.10km
- Public viewpoint 2: 0.01km
- Public viewpoint 3: 0.01km
- Public viewpoint 4: 0.01km
- Public viewpoint 5: 0.02km
- Public viewpoint 6: 0.01km
- Public viewpoint 7: 0.02km
- Public viewpoint 8: 0.15km

VIEWPOINT 1.0: VIEW TOWARD SITE FROM OUTSIDE WILSONS LEAD RD



Viewpoint 1: Panoramic view from Wilsons Lead Road, approximately 10m from the site. The viewpoint is looking in a north-westerly direction towards the site. Taken with a Canon 600D camera with a 50mm lens. This is a public viewpoint. A1 size prints should be viewed at approx. 500mm distance from eye level (recommended), A3 size prints should be viewed at approx. 250mm.

VIEWPOINT 2.0: VIEW TOWARD SITE FROM OUTSIDE WILSONS LEAD RD



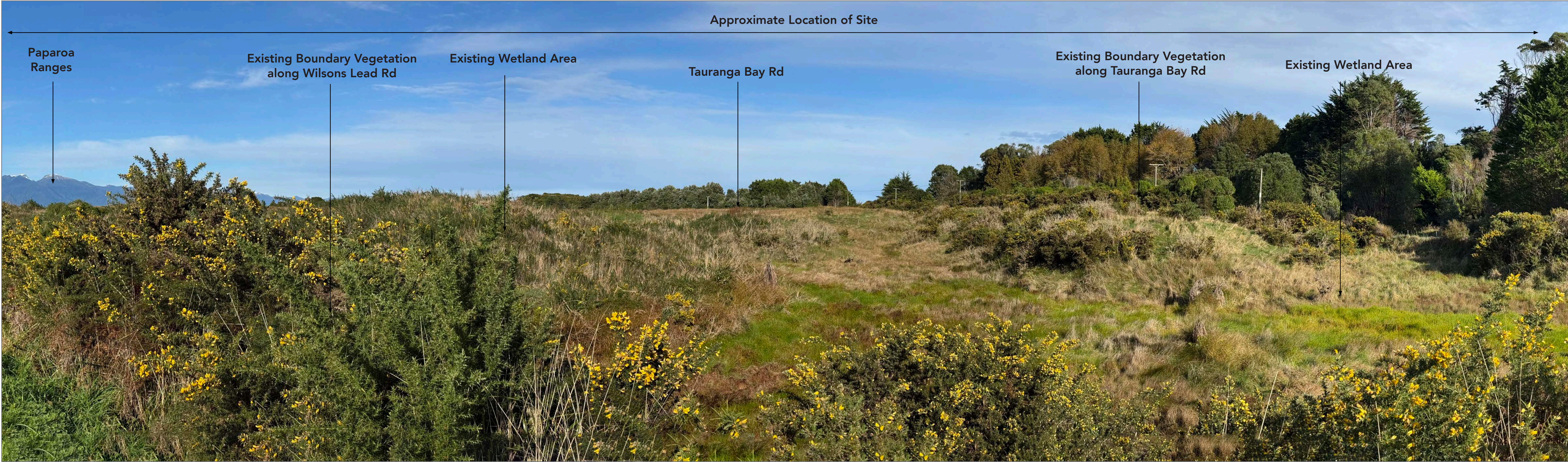
Viewpoint 2: Panoramic view from Wilsons Lead Road, approximately 10m from the site. The viewpoint is looking in a north-westerly direction towards the site. Taken with a Canon 600D camera with a 50mm lens. This is a public viewpoint. A1 size prints should be viewed at approx. 500mm distance from eye level (recommended), A3 size prints should be viewed at approx. 250mm.

VIEWPOINT 3.0: VIEW TOWARD SITE FROM 1088 WILSONS LEAD RD DRIVEWAY



Viewpoint 3: Panoramic view from Wilsons Lead Road, approximately 10m from the site. The viewpoint is looking in a westerly direction towards the site. Taken with a Canon 600D camera with a 50mm lens. This is a public viewpoint. A1 size prints should be viewed at approx. 500mm distance from eye level (recommended), A3 size prints should be viewed at approx. 250mm.

VIEWPOINT 4.0: VIEW TOWARD SITE FROM WILSONS LEAD RD



Viewpoint 4: Panoramic view from Wilsons Lead Road, from outside the site boundary. The viewpoint is looking in a westerly direction towards the site. Taken with a Canon 600D camera with a 50mm lens. This is a public viewpoint. A1 size prints should be viewed at approx. 500mm distance from eye level (recommended), A3 size prints should be viewed at approx. 250mm.

VIEWPOINT 5.0: VIEW TOWARD SITE FROM WILSONS LEAD RD / TAURANGA BAY RD INTERSECTION



Viewpoint 5: Panoramic view from Wilsons Lead Road / Tauranga Bay Road Intersection, approximately 15m from the site. The viewpoint is looking in a southerly direction towards the site. Taken with a Canon 600D camera with a 50mm lens. This is a public viewpoint. A1 size prints should be viewed at approx. 500mm distance from eye level (recommended), A3 size prints should be viewed at approx. 250mm.

VIEWPOINT 6.0: VIEW TOWARD SITE FROM TAURANGA BAY RD



Viewpoint 6: Panoramic view from Tauranga Bay Road, approximately 10m from the site. The viewpoint is looking in an easterly direction towards the site. Taken with a Canon 600D camera with a 50mm lens. This is a public viewpoint. A1 size prints should be viewed at approx. 500mm distance from eye level (recommended), A3 size prints should be viewed at approx. 250mm.

VIEWPOINT 7.0: VIEW TOWARD SITE FROM TAURANGA BAY RD



Viewpoint 7: Panoramic view from Tauranga Bay Road, approximately 20m from the site. The viewpoint is looking in a north-easterly direction towards the site. Taken with a Canon 600D camera with a 50mm lens. This is a public viewpoint. A1 size prints should be viewed at approx. 500mm distance from eye level (recommended), A3 size prints should be viewed at approx. 250mm.

VIEWPOINT 8.0: VIEW TOWARD SITE FROM TAURANGA BAY RD



Viewpoint 8: Panoramic view from Tauranga Bay Road, approximately 150m from the site. The viewpoint is looking in a northerly direction towards the site. Taken with a Canon 600D camera with a 50mm lens. This is a public viewpoint. A1 size prints should be viewed at approx. 500mm distance from eye level (recommended), A3 size prints should be viewed at approx. 250mm.

9.0 LANDSCAPE MITIGATION PLAN



KEY:

- Proposed Native Planting (3m wide, to be retained at a height of at least 4m)
- Proposed Wetland/Gully Riparian Planting
- Site Boundary
- Indicative Power Lines

- NOTES:
- Weeds and invasive species such as gorse, blackberry and ragwort shall be removed prior to planting.
 - A mix of plant species for each area of proposed 3m wide native planting shall be selected from the Section 10.0 Plant Species Palette.
 - Trees > 8m tall shall be clustered in groups of three.
 - Plants shall be planted in a triangular pattern.
 - Existing native species within the planting areas shall be retained and augmented with new planting.
 - All species shall be eco-sourced from the Foulwind Ecological District.
 - Tree canopies shall be kept at least 5.5m clear of any power lines.
 - Proposed native planting beds shall be located at least 4m from power lines.
 - Boundary plants shall be planted at least 1m high at the time of planting.

10.0 PLANT SPECIES PALETTE

Trees >8m mature height	<i>Cordyline australis</i> ti kouka / cabbage tree	*
	<i>Dacrycarpus dacrydioides</i> kahikatea	*
	<i>Dodonaea viscosa</i> akeake	
	<i>Griselinia lucida</i> puka	
	<i>Kunzea serotina</i> kanuka	
	<i>Leptospermum scoparium</i> manuka	
	<i>Melicytus ramiflorus</i> Māhoe / whitey wood	
	<i>Myrsine salicina</i> toro	
	<i>Pittosporum eugenioides</i> tarata / lemonwood	
	<i>Pseudopanax arboreus</i> five finger / whauwhaupaku	
Shrubs 2 - 8m mature height	<i>Coprosma lucida</i> shining karamu	*
	<i>Coprosma propinqua</i> mingimingi	*
	<i>Coprosma repens</i> taupata / mirror bush	
	<i>Coprosma robusta</i> glossy karamu	*
	<i>Cyathea smithii</i> katote / soft tree fern	*
	<i>Dicksonia fibrosa</i> wheki-ponga / golden tree fern	*
	<i>Dicksonia squarrosa</i> wheki / rough tree fern	*
Small Shrubs/Grasses <2m mature height	<i>Pterophylla racemosus</i> kāmahi	
	<i>Myrsine australis</i> red matipo	
	<i>Astelia fragrans</i> kakaha / bush lily	
	<i>Astelia grandis</i> swamp astelia	*
	<i>Gahnia xanthocarpa</i> gahnia (not available)	*
	<i>Carex secta</i> purei	*
	<i>Carex virgata</i> pukio	*

* Species suitable for wetland and riparian planting.
All other species listed are suitable where the margins are well drained.

