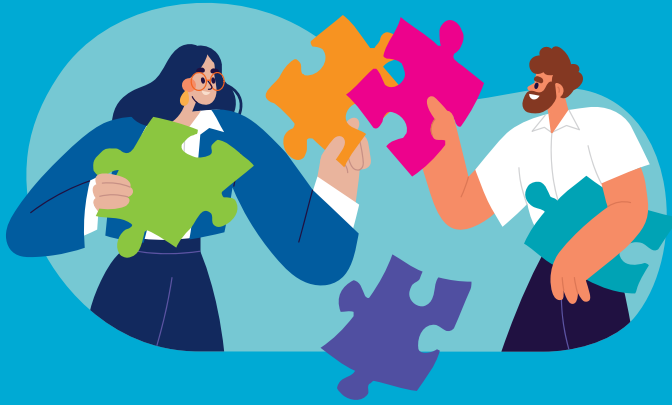




**BULLER**  
DISTRICT COUNCIL  
Te Kaunihera O Kawatiri

Special Edition

# Connect



## Buller's next 10-year plan

Your thoughts, your plan,  
your community's future.

Let's bring  
it together!

As we embark on shaping Buller's next 10-year plan together with our community, we want to hear from you.

## What's the fuss about this 10-year plan?

The Buller District Council's plan for the next 10 years is also called the Long-Term Plan (LTP) and it will cover 2024 – 2034. It is a big document (yep lots of pages) that most people don't have time to read or understand. But it has a big impact on your daily life in our beautiful Buller.

In a nutshell, it outlines Council's goals and what Council aims to do in the coming 10-years and how we plan to pay for this. It also sets out the BIG PICTURE thinking in the vision and general direction for our district moving forward. It gives the reasons behind what we do, includes the actions we commit to, tells you how much these will cost and how we believe we can pay for it.

As you will see, there is a lot in it. Very importantly, every three years we take this document back to the drawing board and set the course for the following 10 years.

To steer the course for the next 10 years,

decide where the money should go and what projects and priorities we should focus on, we need to ask our Buller communities what you want your district to look like in the coming 10-years for you, your mates, kids or whānau.

If you have made it to here, you now have the chance to share your thoughts and contribute to this mighty plan.

**It is YOUR district, YOUR plan, YOUR future, and YOUR chance to share your thoughts with us for you and your community.**

## What is going on in the world impacts our 10-year plan

There has been a lot going on over the last three years. This continues to have an impact on what we can do and what we need to consider for our next 10-year plan.

### Key things that we need to consider are:

- Population decline hitting Buller
- Low socio-economic prosperity
- Water reform uncertainty
- Climate change and the risk of future natural events
- Cost of living crisis
- A subdued economic outlook
- Legislative uncertainty
- Access to telecommunication technology

If you want to know a bit more about these pretty heavy things that impact our little piece of paradise, go to our <https://bullerdc.govt.nz/have-your-say/buller-s-next-10-year-plan/>

For more information check out:  
[bullerdc.govt.nz](https://bullerdc.govt.nz)



Shaping  
our district

# Golden pot of money for the next 10-years? Not quite...

Sadly, we cannot fund all the amazing initiatives in our district and great things we would like to see in Buller. We are aware that part of our district's infrastructure requires some major investment and we are always having to make tough calls on where we spent the money first. At the moment, our only real source of income is rates and any additional funding, major investment or big spending that cannot be funded through external government funding would most likely require a rates increase. Throwing in the things that are going on around us, we face even more constraints.

That's why it is so important that we get your input and make well-informed decisions to be financially sustainable and meet the needs of our community.

## So you are inspired?

This is how you can join the conversation and make Buller better for your children, mokopuna, mates, and whānau.



Tell us what you want Buller to look like in the coming 10-years for your children, mokopuna, mates or whānau online by visiting <https://survey.publicvoice.co.nz/s3/BDC-LTP-Consultation> or filling out the feedback form in this issue of Connect

SCAN ME



TO COMPLETE YOUR FEEDBACK



Give us your five cents worth for Buller's future by filling out one of our one-minute quick polls online <https://survey.publicvoice.co.nz/s3/BDC-LTP-quick-polls>



Check in and find out more by grabbing some information from Council's offices and libraries in Westport and Reefton, service centres, and resource centres across the district or just go online <https://bullerdc.govt.nz/have-your-say/buller-s-next-10-year-plan/>



If you want to have a more in-depth conversation about your district's future, hit us up on [info@bdc.govt.nz](mailto:info@bdc.govt.nz) with the subject LTP 2024 – 2034. Can't wait!



Email [info@bdc.govt.nz](mailto:info@bdc.govt.nz) with the subject LTP 2024 – 2034 if you have any questions.



Stay up to date and see Buller's next 10-year plan taking shape by signing up to our e-newsletter <https://bullerdc.govt.nz/have-your-say/buller-s-next-10-year-plan/>

## What's next?

**We will collect the community's feedback until 12 November to gather actionable and insightful information from the diverse and broad cross-section of our community, we'll use this to inform and create Buller's next 10 year plan. What an amazing opportunity!**

This process forms the base for Councillors and Council staff to carefully assess the collected feedback and make informed decisions about what Council aims to do in the coming 10-years.

This is then written down in the draft 10-year plan (or Long-Term Plan) and the Consultation Document (the short form).

In early 2024 we will bring the 2024 – 2034 LTP and the Consultation Document back to you, and ask if what we put together, has your aspirations at heart. There might be a few things you don't like, but this plan for Buller needs to balance a lot of needs. We will also ask you some questions on a few key issues and present some options about how they could be dealt with.

During the consultation period, submissions from the community will then be taken to help finalise the plan and arrive at a final LTP, which will be adopted by Council. A mighty effort!!



# Your feedback

This feedback form will take approximately 5 minutes to complete. Participation is voluntary, all questions are optional, and you can fill out as much as you like.






Please return this survey to Council's offices in Westport or Reefton by 13 November at 4:30pm.

## Community outcomes

Community outcomes are a big part of Buller's next 10-year plan. They are essentially our **FIVE BIG GOALS** and will steer Council's actions and commitments over the next 10- years. Any actions, money we spend, priorities we set, be it a service or a part of infrastructure should help to move Buller towards one of these.



### 1. How important are the following community outcomes to you?

	Very unimportant	Not as important	Neutral	Important	Very important
 <p><b>Social</b> <i>Our communities feel safe, vibrant, healthy and connected.</i></p>	<input type="radio"/>	<input type="radio"/>	<input type="radio"/>	<input type="radio"/>	<input type="radio"/>
 <p><b>Affordability</b> <i>Our communities are supported by infrastructure, facilities, and services that are quality, efficient, affordable, and meet our current and future needs.</i></p>	<input type="radio"/>	<input type="radio"/>	<input type="radio"/>	<input type="radio"/>	<input type="radio"/>
 <p><b>Prosperity</b> <i>Our district is supported by resilient infrastructure that promotes an innovative and diverse economy, creating opportunities for self sufficiency, sustainable growth and employment.</i></p>	<input type="radio"/>	<input type="radio"/>	<input type="radio"/>	<input type="radio"/>	<input type="radio"/>
 <p><b>Culture</b> <i>Our lifestyle is treasured, our strong community spirit is nurtured, and our inclusive and caring communities understand our whakapapa and heritage.</i></p>	<input type="radio"/>	<input type="radio"/>	<input type="radio"/>	<input type="radio"/>	<input type="radio"/>
 <p><b>Environment</b> <i>Our distinctive environment and natural resources are sustainably managed, healthy and valued.</i></p>	<input type="radio"/>	<input type="radio"/>	<input type="radio"/>	<input type="radio"/>	<input type="radio"/>

### 2. What do these community outcomes mean to you and your community?

---



---



---

## Priorities and projects

We have been busy delivering and ticking off what we set out to do over the last three years in our last 10-year plan and want to know what we should focus on over the coming three years.

### 3. What should our community's key priorities and projects be to make Buller a better place to live?

---



---



---

# Feedback form



## 4. How would you prioritise the following Council services to inform us how the budget should be allocated?

Rank the highest to lowest priority areas, assigning #1 to the issue you consider most important and #12 to the least important. You're not required to rank all items.

- 3 Waters
- Climate Change
- Commercial Infrastructure
- Community Services
- Infrastructure Resilience
- Governance and Elected Member's Support
- Infrastructure Planning
- Property
- Regulatory Services
- Refuse and Recycling
- Roothing and Transport
- Support Services

## Areas of priority - Councils provides a diverse range of services to support the district. They include:

- **3 Waters:** Includes drinking water, stormwater, wastewater – this will depend on the Affordable Water reform outcome.
- **Climate change**
- **Commercial infrastructure:** Includes Westport Airport, Westport Harbour
- **Community services:** Includes customer services, community grants and funding, sports, recreation and cultural facilities and services, libraries, communications, theatre/cinema, economic development.
- **Infrastructure resilience**
- **Governance and elected member's support:** Includes advocacy to central government, leadership and ensuring Council is adhering to its obligations under the Local Government Act 2002.
- **Infrastructure planning**
- **Council property:** Includes public toilets, parks and reserves, cemeteries, housing for the elderly.
- **Regulatory services:** Includes animal management, building and building consents, planning and resource consents, alcohol licensing, food licensing, Class 4 and TAB venue consents, emergency management.
- **Refuse and recycling**
- **Roothing and transport:** Includes urban development, footpaths and culverts, local roads and bridges (SH are under Waka Kotahi NZ Transport), seats and shelters, street lighting and beautification.
- **Support services:** Includes corporate planning, financial and accounting, rating and rates collection, asset management, IT, human resources.

## 5. Feel free to share any additional thoughts or priorities that you think the Council should consider in its planning and budgeting.

---

---

---

## About you

### 6. Are you providing feedback as an individual or for a group/organisation?

- Individual  Group/organisation

Please provide the name of your group/organisation so we know which voice we are hearing:

---

### 7. Where do you live?

- Westport
- Reefton
- Northern Buller
- Punakaiki/Charleston
- Karamea
- Maruia/Springs Junction
- Other

### 8. What is your age group?

- Under 18 years
- 18-24 years
- 25-34 years
- 35-44 years
- 45-54 years
- 55-64 years
- 65-74 years
- 75 years or older
- Prefer not to say

### 9. What is your gender?

- Male  Female  Another gender

### 10. Which ethnic group do you belong to?

- New Zealand European
- Māori
- Samoan
- Cook Islands Māori
- Tongan
- Niuean
- Chinese
- Indian
- Other (please specify):

- Prefer not to say

---

**Privacy Statement:** All feedback (including your name and contact details) will be collected as part of the pre-engagement process, and parts of it might be made public. Please refer to [www.bullerdc.govt.nz/privacy](http://www.bullerdc.govt.nz/privacy) or contact the Council for a copy of the Council's Privacy Statement.

Thank you for giving us your feedback. **This plan is about Buller. It is your thoughts, your plan, your community's future, so thank you for joining the conversation and working together to make Buller better for your children, mokopuna, mates, and whānau.**

**Please return this feedback form to Council's offices in Westport or Reefton by 13 November at 4:30pm.**

For more information check out:  
[bullerdc.govt.nz](http://bullerdc.govt.nz)



Shaping  
our district

Your thoughts, your plan,  
your community's future

Let's bring  
it together!