

**From:** [BDC Lgoima](#)  
**To:** [REDACTED]  
**Subject:** Official Information Request BDC and Bathurst BAU Ref: OIA 016/25  
**Date:** Thursday, 20 February 2025 4:33:42 pm  
**Attachments:** [Bathurst West Coast FTA Project Overview - BDC\\_261124\\_redacted.pdf](#)  
[Notice\\_STO Drop In Dec 24.pdf](#)

---

Dear [REDACTED]

We emailed you on Monday 17 February to clarify *“is the current BAU activity you are interested in, in relation to the Fast Track proposal?”*

We haven't heard back from you to date, we can however release the following Bathurst project overview as attached. There are some details withheld under the Local Government Official Information & Meetings Act section 7 (2)(a) to protect the privacy of individuals.

We hope this answers your queries. If we don't hear back from you we will consider this LGOIMA finalised as at today's date.

You have the right to seek an investigation and review by the Ombudsman of this decision. Information about how to make a complaint is available at [www.ombudsman.parliament.nz](http://www.ombudsman.parliament.nz) or freephone 0800 802 602.

If you wish to discuss this decision with us, please feel free to contact the Buller District Council by return email to [lgoima@bdc.govt.nz](mailto:lgoima@bdc.govt.nz).

Please note that it is our policy to proactively release our responses to official information requests where possible. Our response to your request may be published at <https://bullerdc.govt.nz/district-council/your-council/request-for-official-information/responses-to-lgoima-requests/> with your personal information removed.

Kind regards

Simon Bastion | Group Manager Regulatory Services  
Mobile 027 375 7508 | Email [Simon.Bastion@bdc.govt.nz](mailto:Simon.Bastion@bdc.govt.nz)

Buller District Council | Phone 0800 807 239 | [bullerdc.govt.nz](http://bullerdc.govt.nz)  
PO Box 21 | Westport 7866

Community Driven | One Team | Future Focused | Integrity | We Care

Email Disclaimer: This correspondence is for the named person's use only. It may contain confidential or legally privileged information or both. No confidentiality or privilege is waived or lost by any mistransmission. If you receive this correspondence in error, please immediately delete it from your system and notify the sender. You must not

disclose, copy or relay any part of this correspondence if you are not the intended recipient. Any views expressed in this message are those of the individual sender, except where the sender expressly, and with authority, states them to be the views of Buller District Council.



The banner features a dark blue vertical section on the left with the Buller District Council logo and two speech bubbles. The main area has a teal background with a hand pointing at tree icons labeled with Māori names: Rimu, Puriri, Kauri, Kahikatea, and Fajpa. A red button with a cursor icon is in the bottom right corner.

**BULLER**  
DISTRICT COUNCIL  
Te Kaunihera O Kawatiri

# New trees for Victoria Square

We're conducting a survey to gather community feedback on the replacement of 11 unsafe or noxious trees at Victoria Square in Westport.

 [Click here to vote](#)



## **Bathurst Resources – Company Update**

### **Invite to drop-in Sessions**

Bathurst Resources is to host a series of drop-in sessions to provide an update on our Stockton mining operations including the Buller Plateaux Continuation Project that has been approved by the independent Projects Advisory Group to be listed on Schedule 2 of the Fast-track Approvals Bill.

The drop-in sessions will be held as follows:

- Tuesday 10 December, 5pm – 7pm: Westport Bridge Club
- Wednesday 11 December, Waimangaroa Fire Brigade Hall: 1pm – 3pm
- Wednesday 11 December, Ngakawau Hall: 5pm – 7pm

Please email [westport@bathurst.co.nz](mailto:westport@bathurst.co.nz) if you would like any further information.

# **Buller Plateaux Continuation Project**

## **Community and Stakeholder**

Buller District Council  
26 November 2024

## Company Overview

Bathurst Resources Limited (**BRL**), including Joint Venture Company BT Mining Limited (**BT**) is New Zealand's leading coal producing company with operations throughout New Zealand providing coal for local steel making, domestic dairy and food processing industries, and exporting high quality metallurgical coal to international customers.

We have two operating mines in the South Island: Stockton (north of Westport) and Takitimu (north of Invercargill).

In the North Island BRL operate Maramarua and Rotowaro in the Waikato region.

# Company Overview

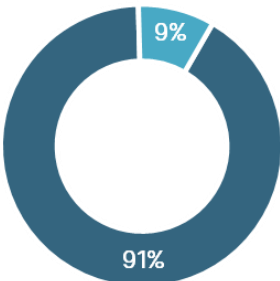
## Bathurst at a glance



## Quick facts

Operations	4 operating mines – 3 via a 65% owned joint venture
Markets	Export and domestic
Production under management	1.9 Mt - FY24
Production by market	58% export, 42% domestic
Sales tonnes by product use	84% steel, 16% food
FY24 EBITDA	NZD \$91m
People	> 675

FY24 sales revenue by product use (100% basis)



■ Steelmaking ■ Process heat

## Project Overview

# Overview: Buller Plateaux Continuation Project

- BRL proposes to extend its mining operations via continuation of existing, and securing new, mine extension areas on the Buller Plateau.
- There is approximately 20 million tonnes of coking quality coal suitable for the export market.
- If the various consents can be secured this will have a mine life of approximately 25 years.
- The proposal to secure these various consents is called the Buller Plateaux Continuation Project (the Project)
- If the consents can be secured, the Project will have ongoing nationally and regionally significant benefits for Buller, the West Coast and New Zealand.
- The project has been included as one of the 149 projects included on Schedule 2 of the Fast-track Approvals Bill.



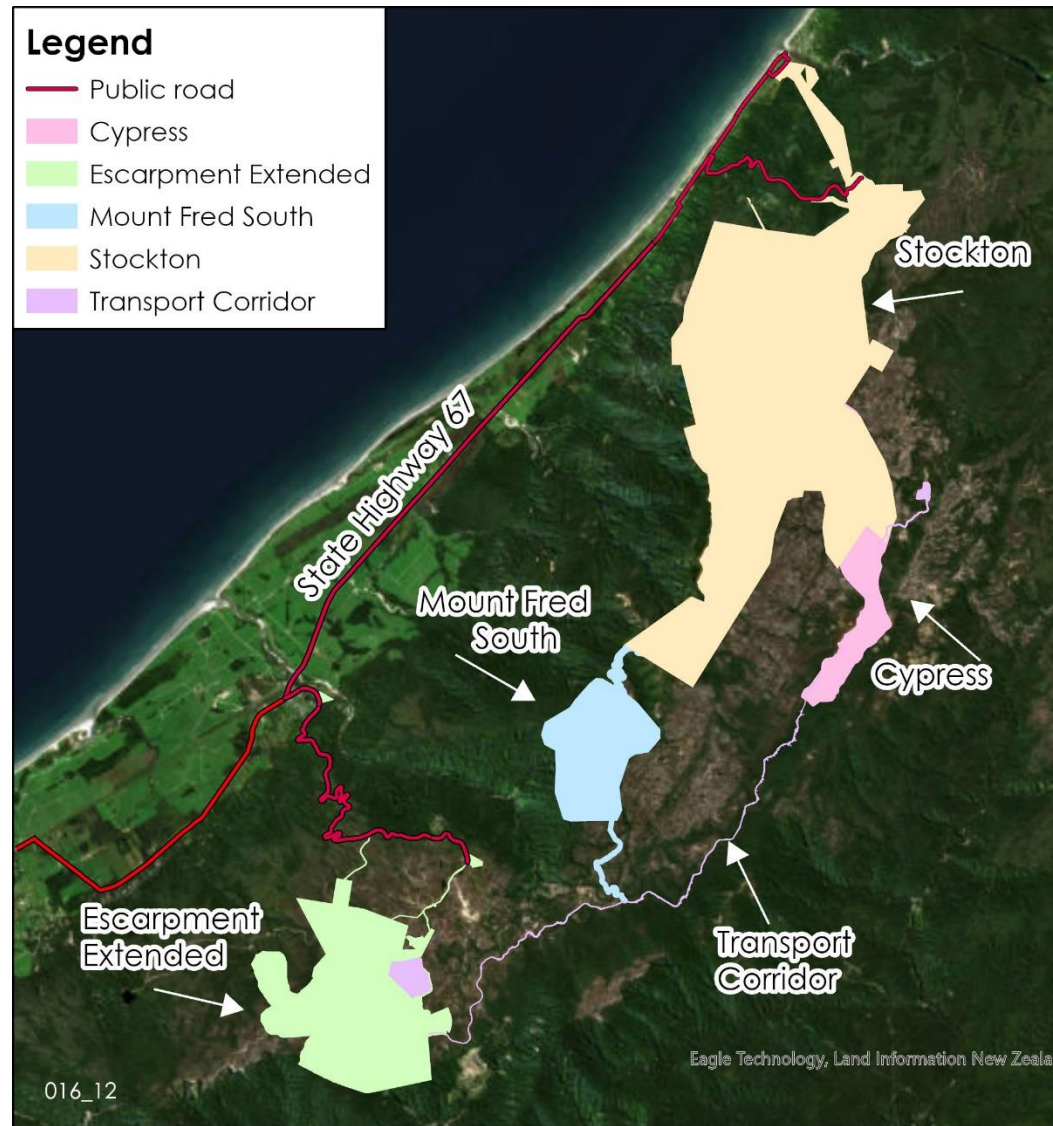
# Project Area

## The Stockton Plateau:

- Stockton Mine (including the aerial ropeway and Ngakawau Rail loadout area)
- Upper Waimangaroa mine permit area (including Cypress Mine, Mt Fred South and the Transport Corridor)

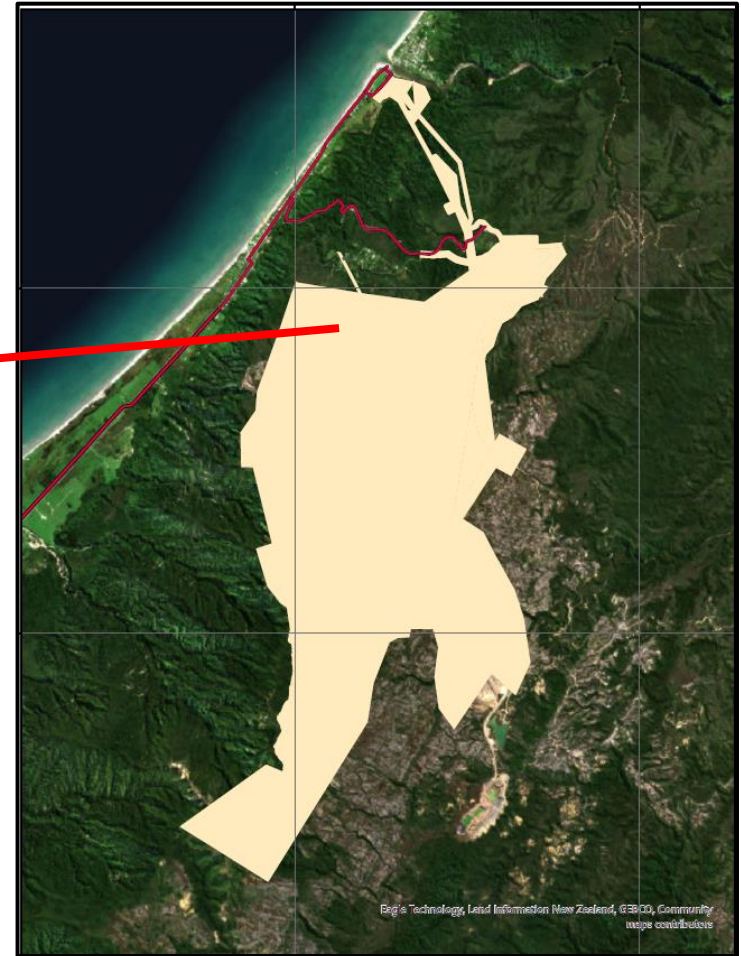
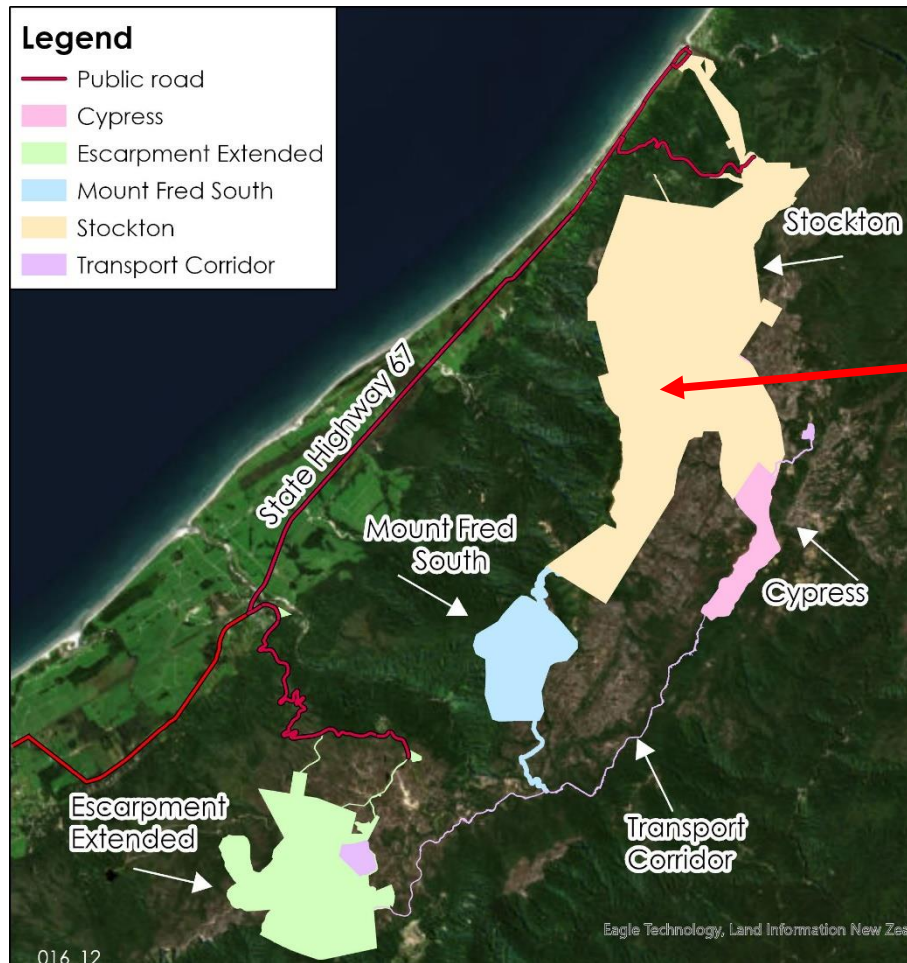
## The Denniston Plateau:

- Includes the Escarpment, Whareatea mine permits and Sullivan coal mining licence areas
- Southern end of the coal transport corridor



## Project Elements

# Stockton Mine

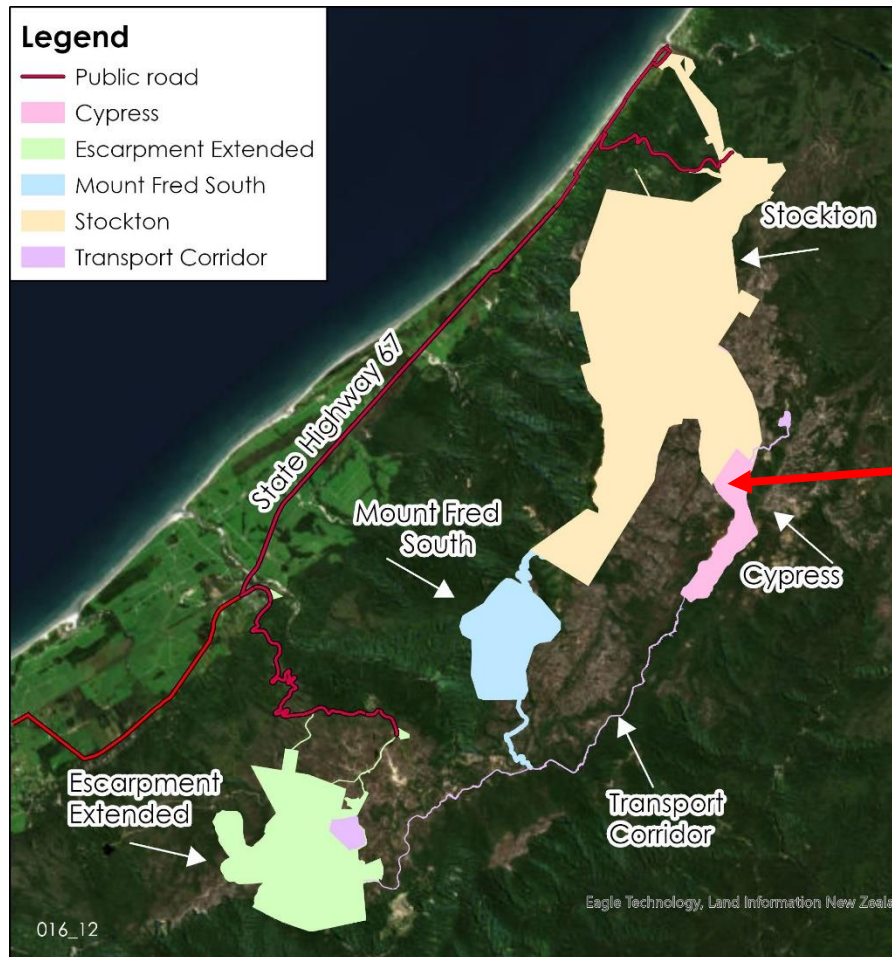


# Stockton Mine

- All of the land within the Stockton Coal Mining Licence is owned by BT Mining. There are also some small areas of Crown owned land administered by LINZ, DOC, and Buller District Council adjacent to the CML that are part of the existing Stockton operations.
- Coal is transported from the Stockton mine via a 7.4km haul road and 2.3km aerial cableway to a stockpile and rail load out area located at Ngakawau. This is a key component supporting coal export logistics from the Stockton mine to the Lyttleton Port
- Stockton Mine has the administration area (including offices, bathhouse, stores, carparking, storage sheds, laydown areas and a helipad) a maintenance area (with large workshops and service bays, storage areas for hazardous materials), and water management structures.



# Cypress

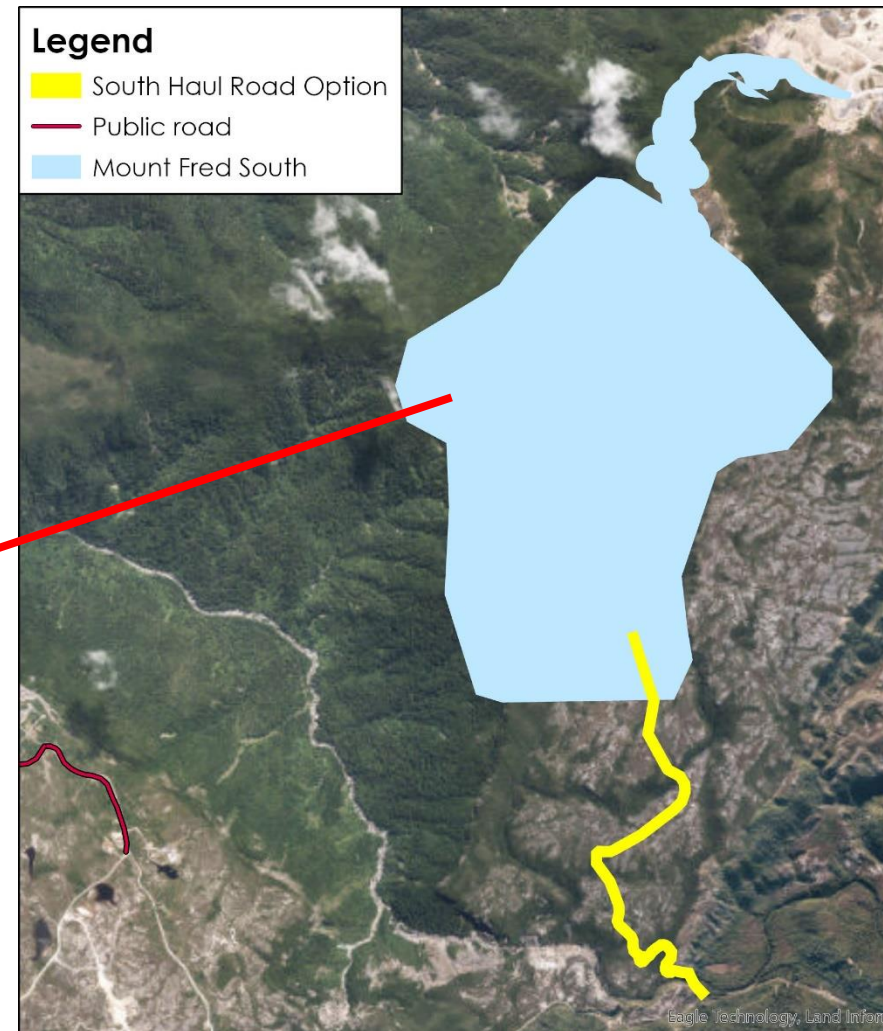
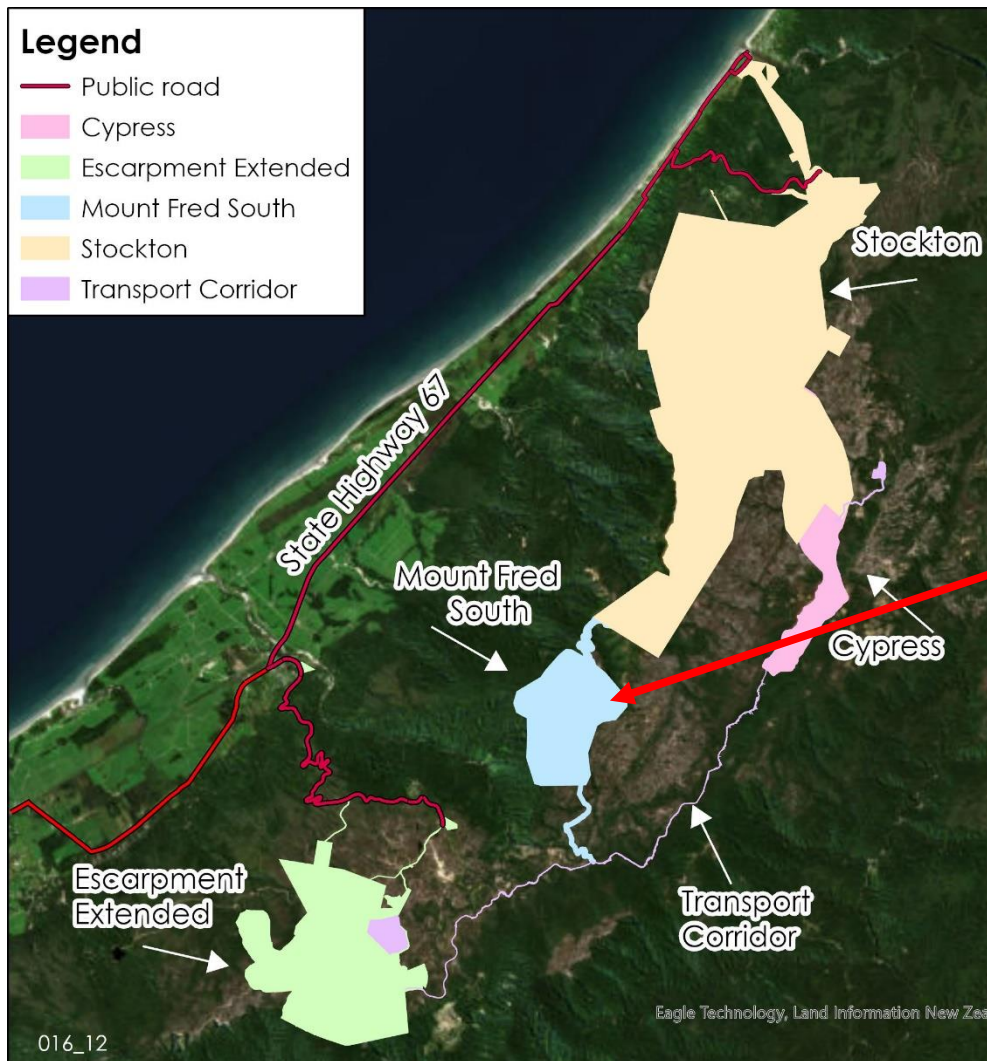


## Cypress

- The Cypress Mine sits adjacent to the Stockton Mine on the Stockton Plateau and is divided into two areas – Cypress North and Cypress South.
- Access to the Cypress Mine is via a 3.7km haul road from the Stockton Mine area to the north.
- Given the Cypress resource consents are in place up to 2040 and the LINZ Access Arrangements to 2038, these elements will not be included as part of the FTA application.



# Mt Frederick South

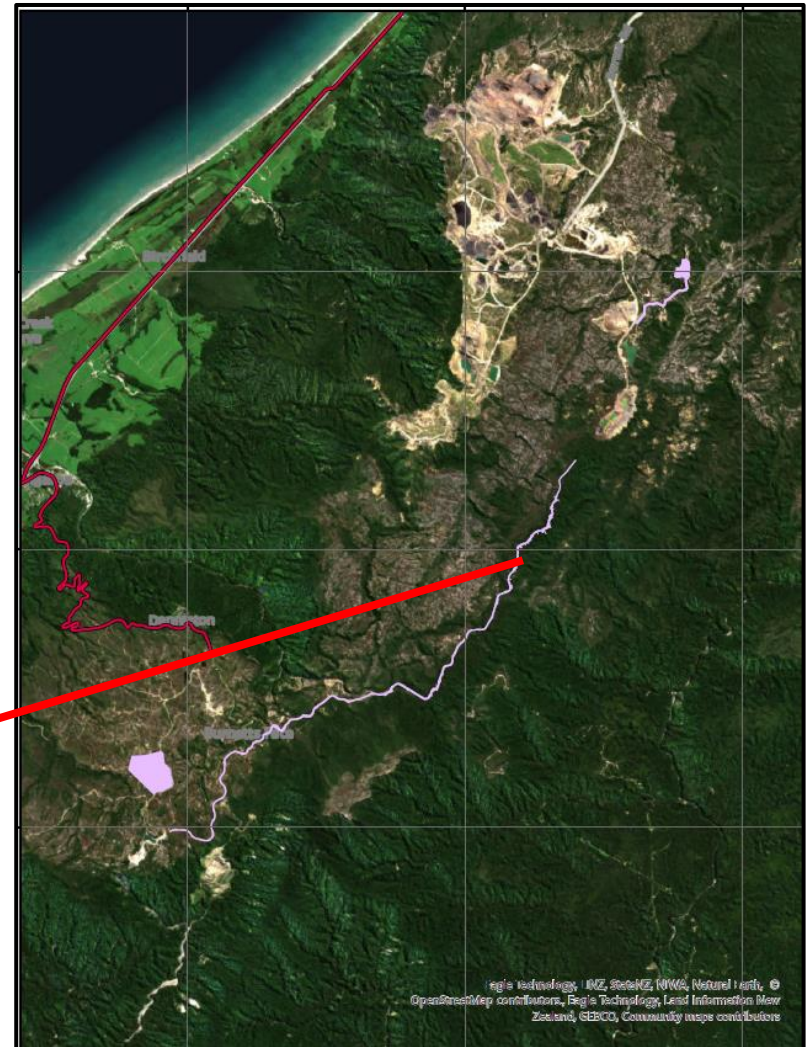
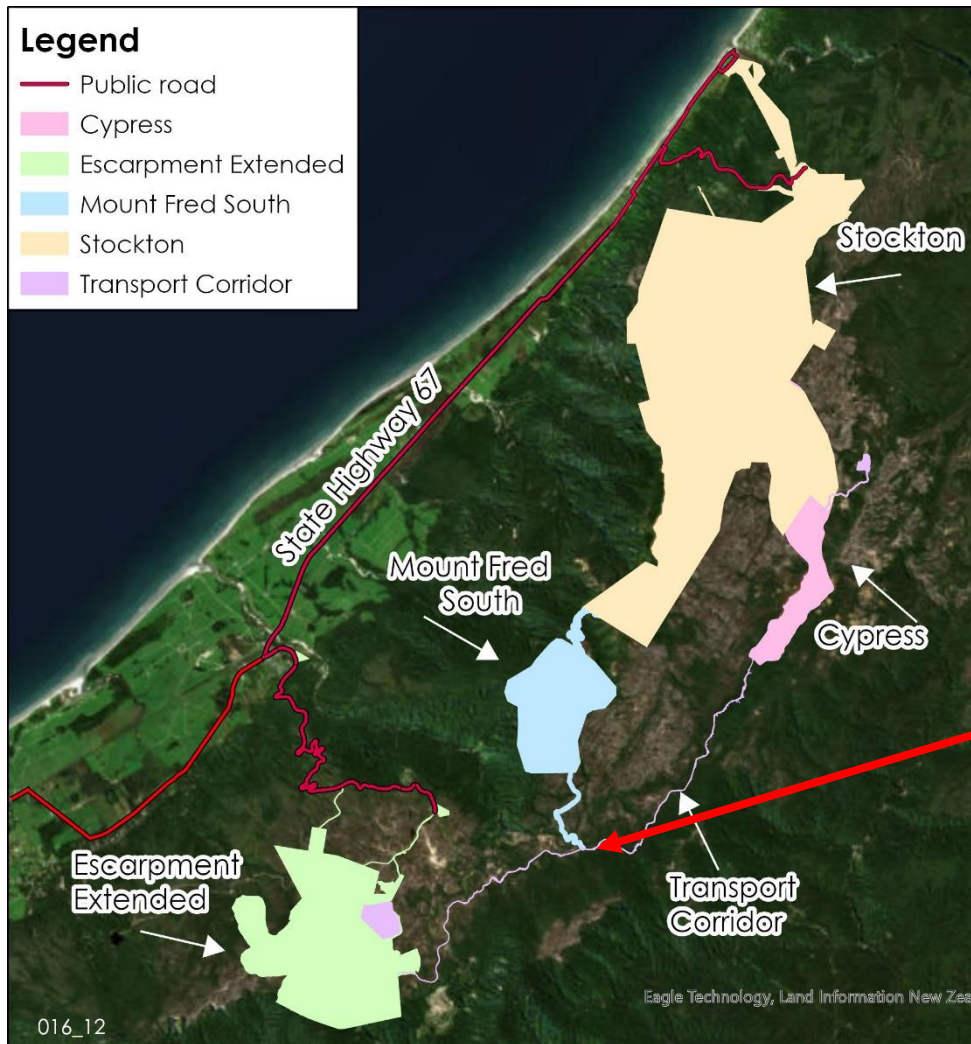


# Mt Frederick South

- Mt Frederick South is situated on the Stockton Plateau, on Crown Land administered by LINZ and DOC.
- Part of the area has been previously mined (underground) however mining in this area will require new authorisations.
- All coal will be transported via an access road from Mt Frederick South to the existing Stockton facilities utilising mine trucks.
- Options for the haul road are still being investigated



# Denniston to Stockton Coal Transport Route

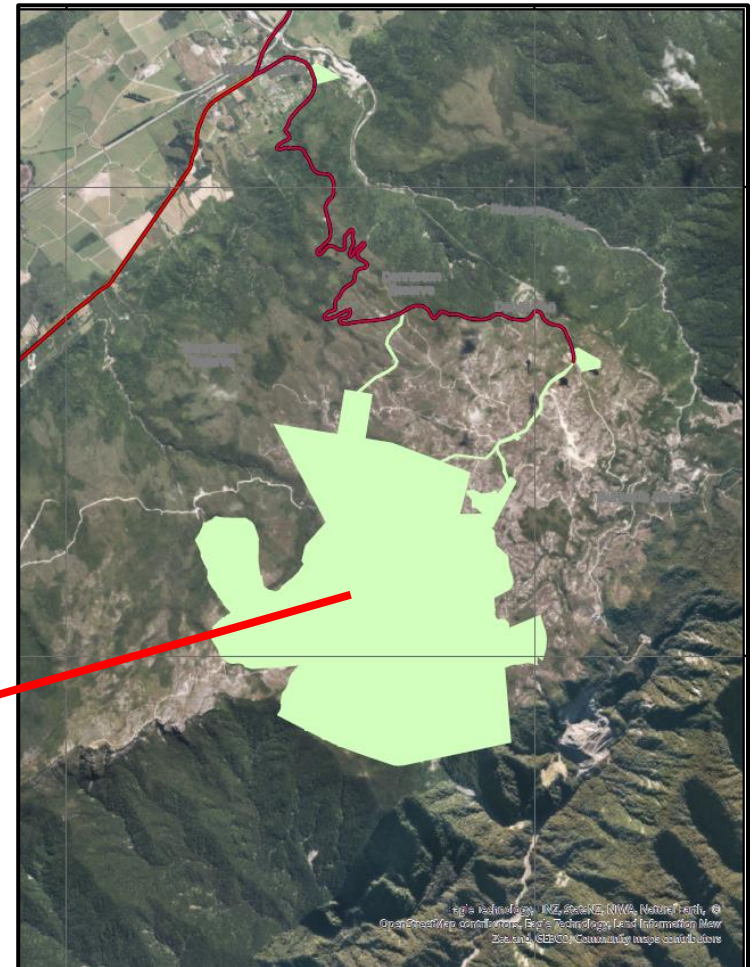
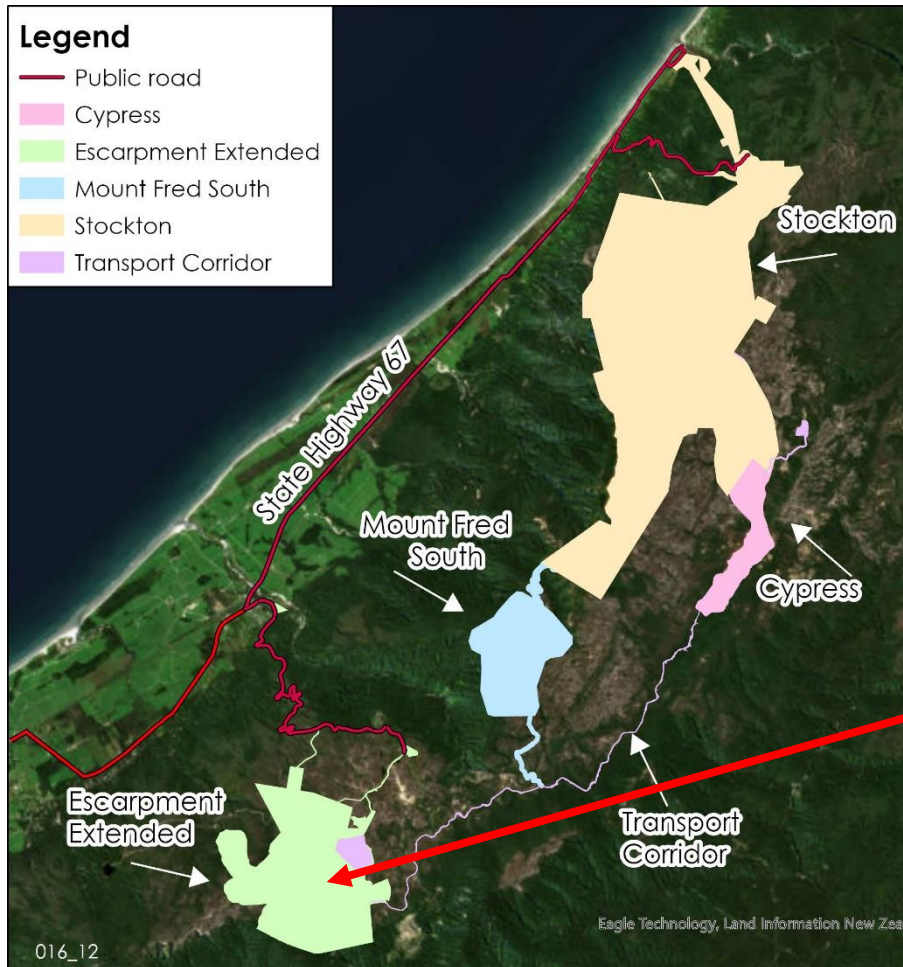


## Denniston to Stockton Coal Transport Route:

- The Project includes developing a link between the Denniston and Stockton Plateau, for the purpose of transporting coal, mobile plant and personnel between the two areas.
- It is proposed that a haul road be constructed that links the Denniston and Stockton Plateau through the Upper Waimangaroa Valley. (Upper Waimangaroa Haul Road (UWHR)).
- The UWHR is approximately 12km in length and. with only 4km being greenfields construction. The remaining 8km will involve upgrading existing roads or tracks. The UWHR connects with the Cypress haul road to take coal to the Stockton coal processing plant



# Escarpment Extended Project (EEP)



# Escarpment Extended Project (EEP)

- The EEP is located on the Denniston Plateau. The EEP component of the project proposes the development of coal resources within the West Whareatea Mining Permit, Escarpment Mining Permit and Sullivan Coal Mining Licence areas.
- Escarpment Mine is currently under care and maintenance. A new consent will be submitted to replace its current approval.
- The Project is located primarily on land within the Mt Rochfort Conservation Area that is administered by the Department of Conservation.
- Once fully operational coal will be trucked to Denniston via the Upper Waimangaroa Coal Transport corridor.

# Environmental Assessments

# Environmental effects

- Key effects to be considered for the Project include (but not limited to):
  - Cultural
  - Terrestrial ecology
  - Wetlands
  - Aquatic ecology
  - Surface water quality
  - Groundwater
  - Landscape
  - Heritage
  - Amenity / Recreation
  - Noise, vibration and blasting
  - Air quality
  - Traffic
  - Lighting
  - Socioeconomic
  - Mine closure/rehabilitation
  - Offsetting and Compensation
  - Final landform profiles and sediment/erosion management plans, waterways
  - Green house gas assessment
  - Waste Management including tyre storage or disposal
  - Ecotoxicology to support site-specific water quality criteria
  - Geotech/land stability
  - Geochemistry and acid mine drainage
  - Bonds and insurances

# Project Timeline

# FTA Project Milestones

The Fast Track Bill is anticipated to be enacted by early 2025. Bathurst intends to submit an application as soon as possible after receiving Royal assent.



# Socio-economic Contributions

## Socioeconomic Profile

BRL engaged the Aigis Group to develop a socio-economic profile of our West Coast operations. Data in the report was sourced from:

- An analysis of publicly available material, generated by Infometrics, StatsNZ, and Development West Coast
- Data generated from three surveys of the mining workforce conducted between December 2023 and April 2024
- Interviews with West Coast public and private organisations, including local government, related agencies, and businesses and community organisations



### Socioeconomic Profile of West Coast Operations

#### Research Report



June 2024

**AIGISGROUP**

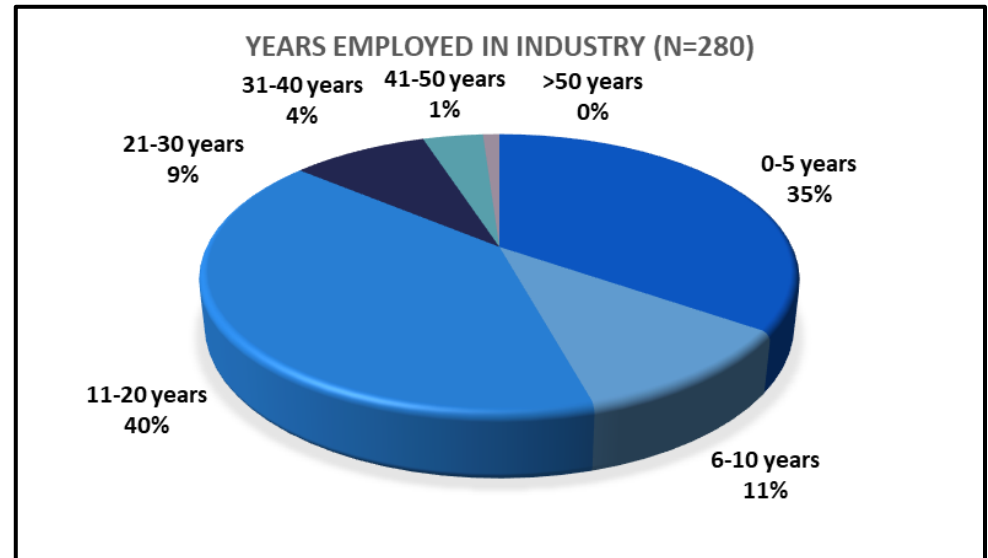
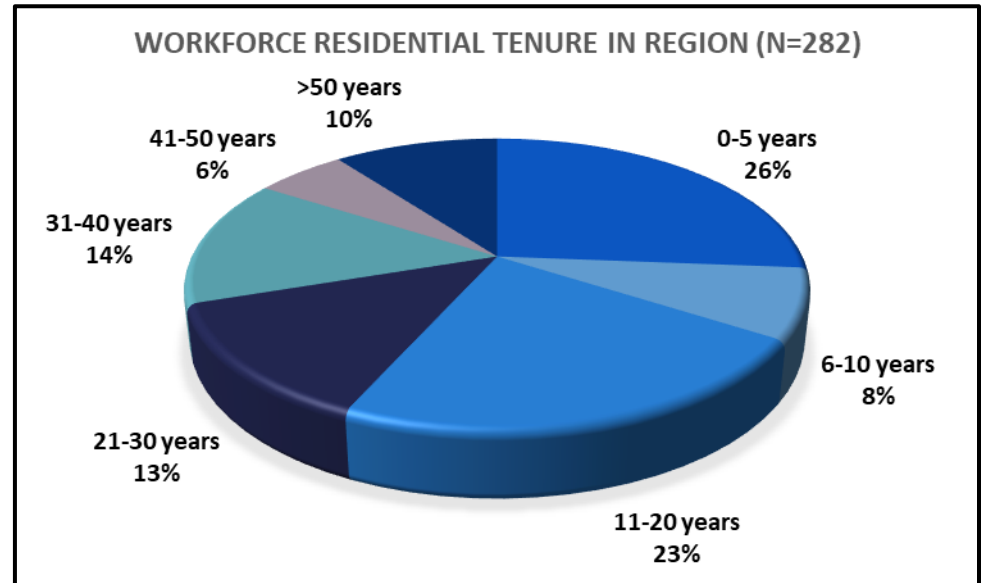
# Buller Plateaux Continuation Project - Significance

From workforce and industry surveys undertaken in early 2024

- Bathurst employed 317 people (7% of the Buller Workforce, 1.9% of the West Coast)
- With another 72 full time contractors
- Salaries and wages amounted to \$27.8M
- For the 12 months ending 31 March 2024 Bathurst spent \$75.9 million with 127 businesses operating in Buller and West Coast,
- In the same period, Bathurst made over \$800,000 in community contributions to organisations on the West Coast.

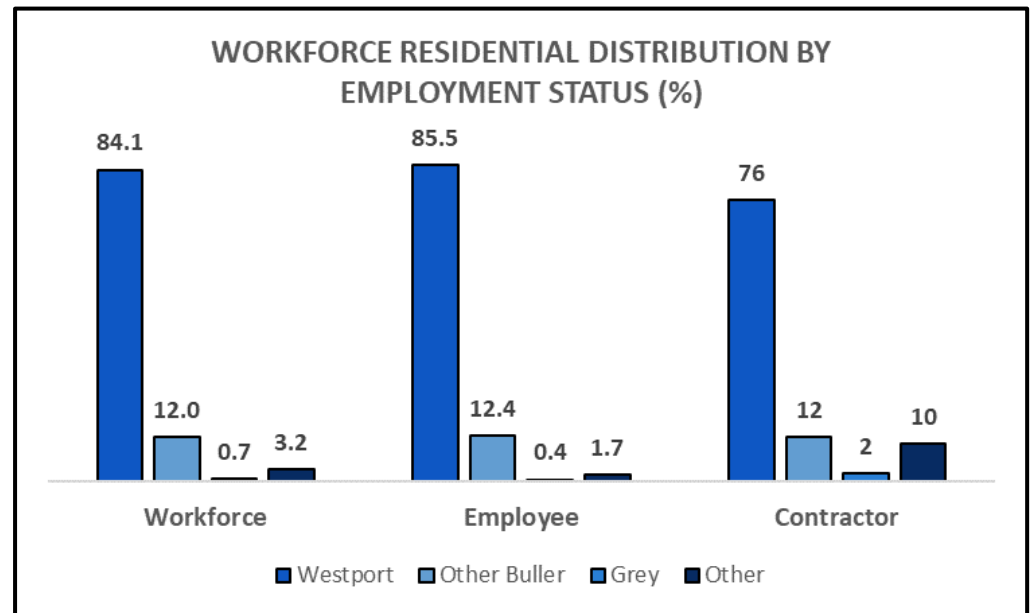
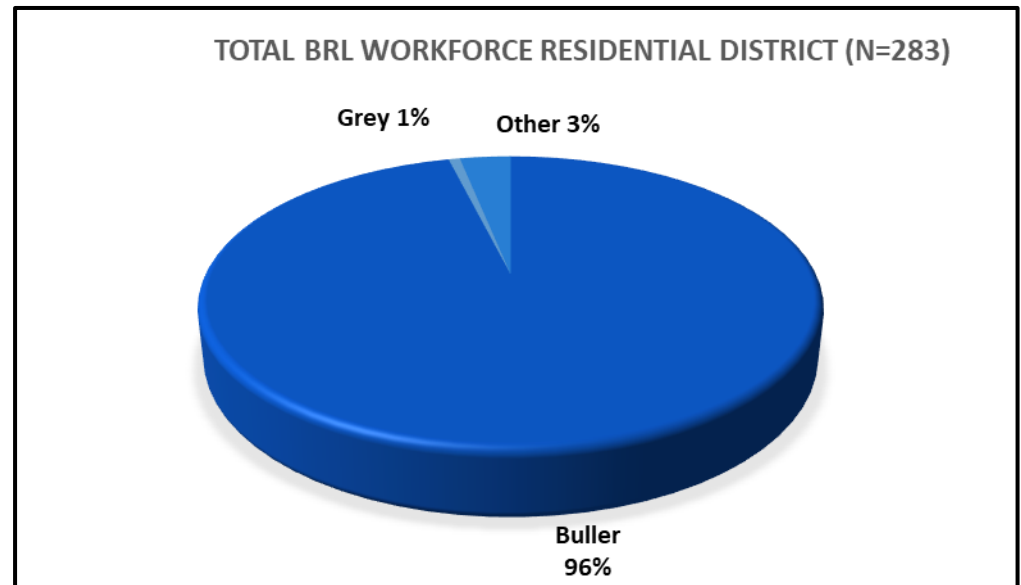
## Workforce Residential and Industry Tenure

The workforce is both long-term resident (average 22 years) and long-term employed in the industry (average 12 years), demonstrating a high level of commitment to the region.



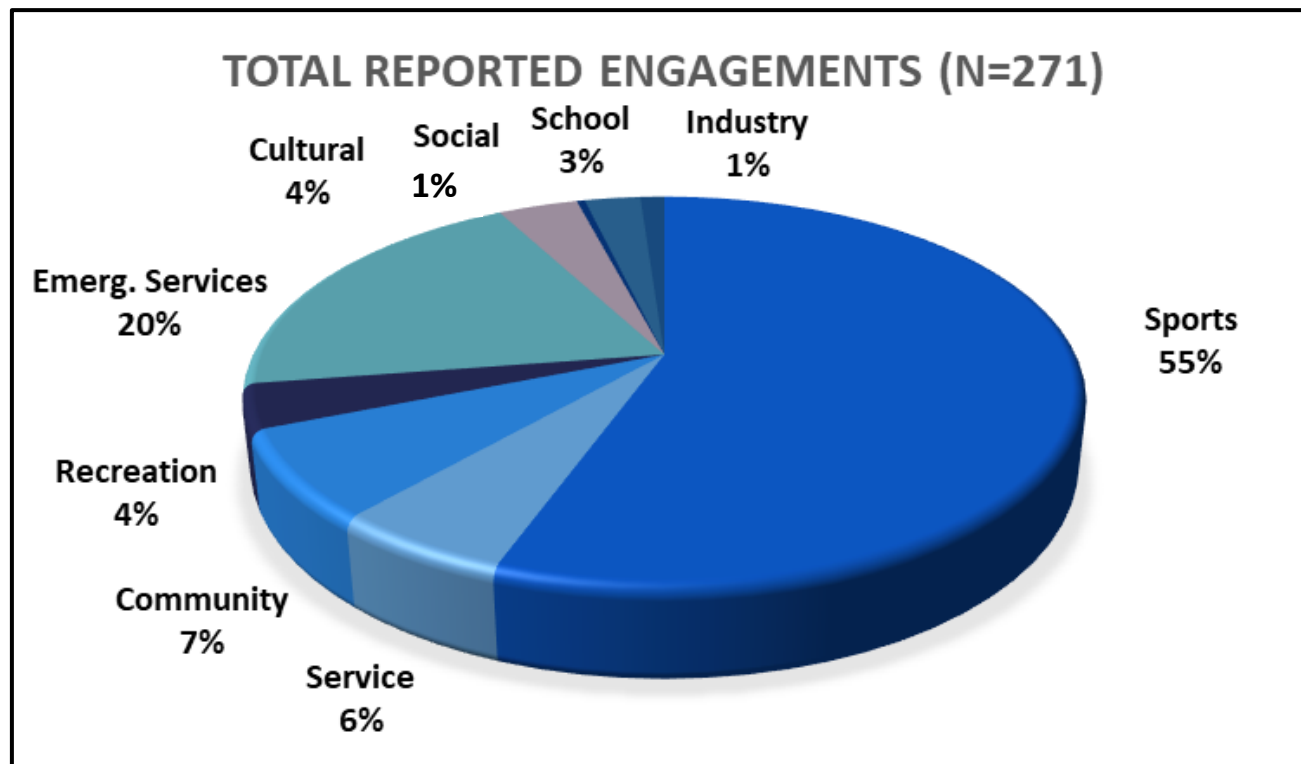
## Residential Location

- 97% of the workforce resides in the West Coast Region.
- 96% resides in the Buller District and around 84% in Westport and surrounds.
- Contractors constitute the largest workforce group resident in other areas, as may be expected given the nature of their work.



## Community Ties and Social Contribution

- 170 involvements across 9 categories of social and community activity, and a total of 271 engagements with these were reported for workforce households, including multiple involvements for some households.
- This represents a further contribution to social ties of the workforce in the community.



## Next Steps

- We are continuing to engage with Iwi and other key stakeholders
- We are working through Project Pre-Feasibility and Feasibility Studies, completion of AEE, Condition and Management Plan Development.
- A community consultation process is scheduled to commence from early December.
- Ongoing development of effects assessments.
- Development of Project Application, including draft management plans, draft conditions.
- Further opportunities to engage with the Buller District Council.

# Contacts

[REDACTED] section 7 (a)

**Environmental Manager**

[REDACTED]

[REDACTED] section 7 (a)

**Group Manager Community**

[REDACTED]