



BULLER
DISTRICT COUNCIL
Te Kaunihera O Kawatiri



Have
your
say!

Zone One Rubbish Collection Consultation

Statement of Proposal April 2024 | To be implemented from 1 July 2025

The current situation in zone one

Background

Under the requirements of the Waste Minimisation Act 2008 Buller District Council must promote effective and efficient waste management and minimisation within the District. This is achieved by:

- Having a Regional Waste Minimisation and Management Plan.
- Providing a rubbish and recycling collection for zone one households in Westport and Reefton.
- Providing for a rubbish and recyclable materials drop off at transfer stations in Westport and Reefton and at Maruia and Karamea small landfills.

This proposal applies only to the rubbish collection service for households in zone one. Zone one covers Westport, the areas from Westport to the North until Mōkihinui Bridge, including Seddonville, Granity and Waimangaroa, Cape Foulwind, Charleston, Fox River and Punakaiki to the South and Buller Gorge Road, Inangahua, Reefton, Blackball, Ikamatua to the East.

The current waste management level of service offered in zones two and three are not proposed to change.

Current kerbside rubbish collection service in zone one

A kerbside rubbish collection service is currently offered via a private commercial operation managed and operated by Smart Environmental Ltd. The service is a Pay As You Throw (PAYT) model using either 60 litre official rubbish bags or a private wheelie bin service on a periodic basis. The official rubbish bags are currently sold for \$9.10 incl. GST. Bin costs vary depending on the bin size and collection frequency and the prices are set by Smart Environmental Ltd. This service is self-funding and not subsidised by Council.

Current kerbside recycling collection service in zone one

A kerbside recycling collection service is currently provided using a 240L recycling bin and a 45L glass crate, funded by Council via the waste management rate currently at \$178 incl. GST per annum. The service is delivered by Smart Environmental Ltd on behalf of the Council. The kerbside recycling collection system in zone one is not proposed to change.



Transfer stations and landfills

Transfer stations located at Westport and Reefton accept rubbish and recyclable materials. The public can also drop off rubbish and some recyclable material at Karamea landfill and Maruia landfill.

Rubbish from zone one households in Westport and Reefton is transported to Nelson's York Valley Landfill. Recyclable materials are transported to the materials recovery facility operated by Smart Environmental Ltd in Westport, they are then sorted into different products and transported to markets around the country and abroad.

Drivers for change

Issues to be addressed

A number of issues were identified and presented to Council in July 2023, which suggest it is timely to make a change to kerbside household collections:

- The waste collection sector is moving away from bags to wheelie bins for health and safety reasons. Wheelie bins reduce the risk of infection from waste and manual handling injuries.
- The Ministry for the Environment has announced the standardisation of household collection services focussed on recyclable materials and food waste.
- There is ongoing illegal dumping across the District and providing a consistent service for all households is anticipated to reduce illegal dumping.
- By controlling services, Council is able to invest on behalf of the community to capture more materials for recycling and recovery.
- By providing a universal household collection service to the specified areas of the Buller District, Council is able to manage costs for each household.

Decision to reconsult

The outcomes of the consultation and subsequent options and scenarios were presented in a report to Council on 13 December 2023. The first decision Council needed to make was whether to maintain the delivery of Zone one rubbish collection through the private sector (which is the status quo), or for Council to take over to provide the service via a delivery contractor. The second decision was whether to continue with a bag collection or to introduce wheelie bins. The third decision was whether to introduce the new service without further community consultation, to reconsult with the community on the recommended options using estimated costs or to reconsult with the community using tender prices.

At the December 2023 meeting, Council resolved to select four options to consult on for the Zone one rubbish collection. Two of which were to be private sector driven (Option Status Quo and Option 1B) the other two options were Council driven (Option 2B and Option 2E).

The Council December 2023 meeting agenda can be found at: <https://bullerdc.govt.nz/media/qjxnb235/231213-council-agenda-public.pdf>

Council resolved to reconsult with the community on the recommended options using estimated costs.

Zone one rubbish collection consultation 2023

Council agreed at its July 2023 meeting to consult with the community on a proposed change in the delivery of Zone one rubbish collection. The consultation took place from 7 August to 8 September 2023 and proposed four key changes:

- 1. A shift from using 60 litre rubbish bags to having a 120 litre wheelie bin provided by Council.**
- 2. Mandatory rubbish and recycling collection.**
- 3. Changing from weekly to fortnightly rubbish collection.**
- 4. Paying for rubbish and recycling collection through rates (rather than buying rubbish bags) i.e. a targeted universal rate charge.**

Written and oral submissions highlighted a range of views from the community including some supporting a shift to collection of rubbish in wheelie bins, concerns about a shift away from the current 'pay as you throw' approach, concerns about making rubbish collection mandatory and few specific comments about Council delivering the rubbish collection through a third party.

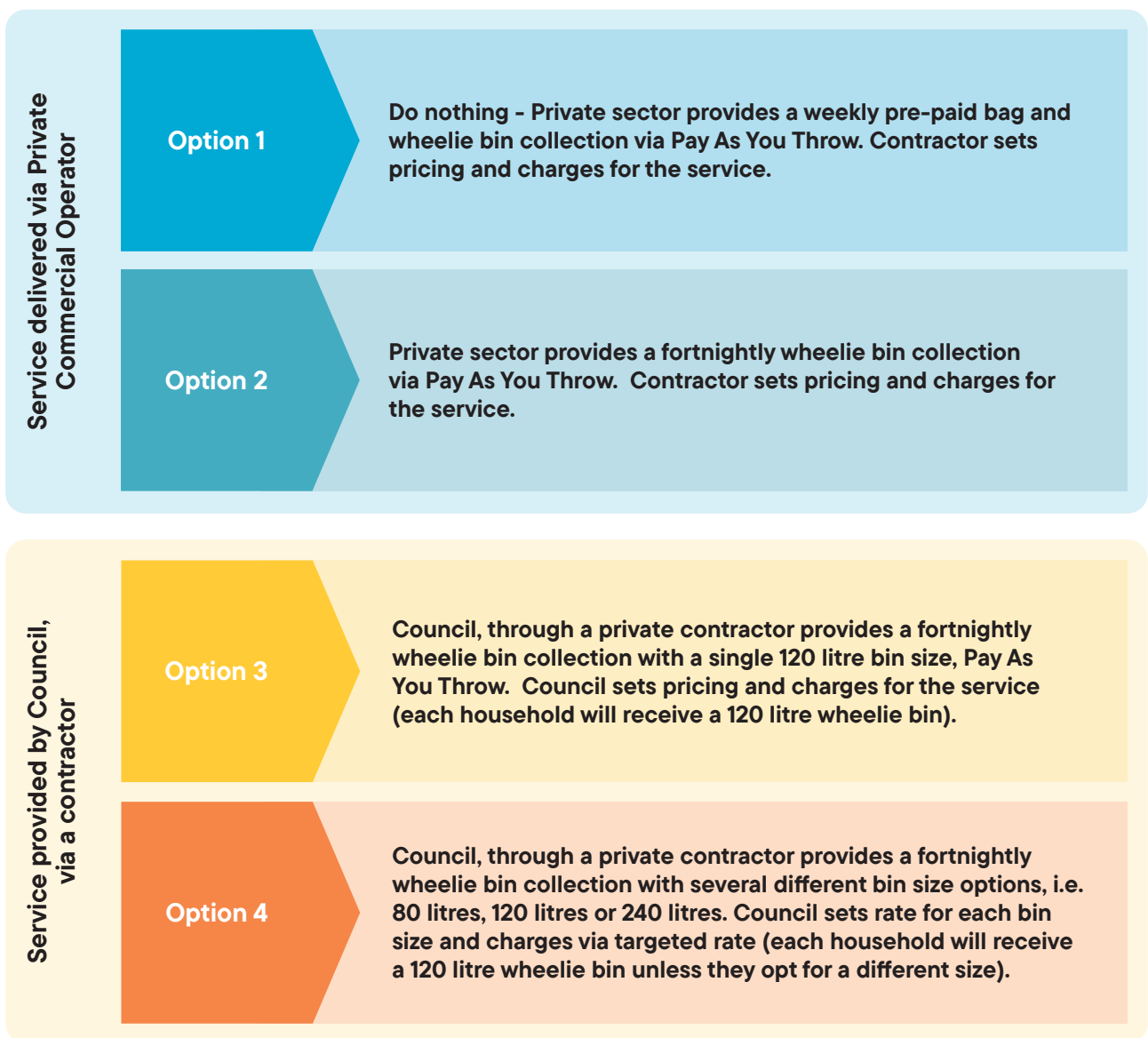
The consultation resulted in a range of submissions and public views and feedback on the proposal. Overall, 73% of the submitters were opposed to the proposal.

The proposal

Council is proposing changes to the way that rubbish collection services are delivered and funded in zone one from 1 July 2025.

All costs presented in this Statement of Proposal are in 2023/24 financial year figures to allow an accurate comparison of options in today's pricing. They will be subject to change when implemented in 2025.

There are four options to consider through this consultation:



The above options do not include the current recycling rate of \$178, - incl GST as of 2023/24 financial year. The options have been estimated in today's dollars for the purposes of consultation on a comparison between differing levels of service for rubbish collection. The recycling rate will continue to be in addition to these costs.

The option Council decides on will be rolled out for all households in Zone one with rubbish collection. The table that follows provides the cost estimates, advantages and disadvantages of each option.

Consultation options

Service delivered via Private Commercial Operator

Option 1

Status Quo - Private sector provides a weekly pre-paid bag and wheelie bin collection via Pay As You Throw. Contractor sets pricing and charges for the service.

Current cost to the ratepayer

Bags

\$9.10 per 60 litre bag
 \$236.60 per annum
 (for one 60 litre bag per fortnight)
 \$473.20 per annum
 (for one 60 litre bag per week)
 \$946.40 per annum
 (for two 60 litre bags per week)

120 litre wheelie bin

\$28.50 per pick up
 \$741.00 per annum (collected fortnightly)

240 litre wheelie bin

\$39.30 per pick up
 \$1,021.80 per annum (collected fortnightly)

Option 2

Private sector provides a fortnightly wheelie bin collection via Pay As You Throw. Contractor sets pricing and charges for the service.

120 litre wheelie bin

\$24.50 per pick up
 \$637 per annum (collected fortnightly)

240 litre wheelie bin

\$34.50 per pick up
 \$897 per annum (collected fortnightly)

Service provided by Council, via a contractor

Option 3

Council, through a private contractor provides a fortnightly wheelie bin collection with a single 120 litre bin size, Pay As You Throw. Council sets pricing and charges for the service.

Estimated cost to the ratepayer

120 litre wheelie bin

\$17.00 per pick up
 \$442.00 per annum (collected fortnightly)

The initial cost for the bin is included in the cost per pick up or the per annum charge. There will be no one-off charge to users for the bin.

Option 4

Council, through a private contractor provides a fortnightly wheelie bin collection with several different bin size options, i.e. 80 litres, 120 litres or 240 litres. Council sets rate for each bin size and charges via targeted rate.

80 litre wheelie bin

\$245 per annum
 (collected fortnightly)

120 litre wheelie bin

\$295 per annum
 (collected fortnightly)

240 litre wheelie bin

\$435 per annum
 (collected fortnightly)

The initial cost for the bin is included in the targeted rate. There will be no one-off charge to users for the bin.

Service delivered via Private Commercial Operator

Option 1

Option 2

Service provided by Council, via a contractor

Option 3

Option 4

Advantages

- Users only pay for what they use, via pre-purchased bags, bin tags payment methods can be introduced by the contractor.
- Wheelie bins can allow fortnightly collection instead of weekly, this will be defined by the contractor to optimise the delivery service.
- Households that minimise waste (produce less than one bag per fortnight) will pay less.

- Users only pay for what they use, via pre-purchased bin tags.
- Wheelie bins can allow fortnightly collection instead of weekly.
- Improved Health & Safety and environmental containment versus current rubbish bags.

- Users only pay for what they use, via pre-purchased bin tags.
- Each household will receive a 120 litre wheelie bin).
- Wheelie bins can allow fortnightly collection.
- Improved Health & Safety and environmental containment versus current rubbish bags.

- Several bin size options available (80 litre, 120 litre, 240 litre) and potential for optimised cost structures.
- Each household will receive a 120 litre wheelie bin unless they opt for a different size.
- Households that minimise waste can opt for a smaller bin at a lower cost.
- The availability of a refuse bin for residents with regular pick-up times, that is already charged for via rates, is likely to lead to a more appropriate disposal of waste and may potentially reduce illegal dumping.
- Improved Health & Safety and environmental containment versus current rubbish bags. Households do not need to purchase pre-paid rubbish bags or arrange for a wheelie bin service from a private contractor.
- Price per household is likely to be lower for fortnightly collection compared to weekly collection.

Disadvantages

- Households are required to purchase pre-paid rubbish bags or arrange for a wheelie bin service from a private contractor.
- Price per household is likely to be higher for Pay As You Throw compared to Targeted Rate funded service for the higher users and rubbish generators.
- Increased illegal dumping risks if Contractor-set pricing too high.
- Households are likely to minimise the number of times they put their bin or bag out, potentially resulting in smelly rubbish.
- If pre-paid tags are used for wheelie bins, some may get stolen.
- Bag collections result in more health and safety issues for the contractor.
- Service inefficiency as routes operate regardless

- Households are required to arrange for a wheelie bin service from a private contractor.
- Price per household is likely to be higher for Pay As You Throw compared to Targeted Rate funded service.
- Increased illegal dumping risks if Contractor-set pricing too high.
- Households are likely to minimise the number of times they put their bin out, potentially resulting in smelly rubbish.
- If pre-paid tags are used for wheelie bins, some may get stolen.
- Service inefficiency as routes operate regardless of collection quantity.

- Upfront Council establishment and ongoing administration costs as well as the management for collection services.
- Service inefficiency as routes operate regardless of collection quantity.
- Price per household is likely to be higher for Pay As You Throw compared to Targeted Rate funded service.
- Higher collection costs may result in illegal dumping.
- Households are likely to minimise the number of times they put their bin out, potentially resulting in smelly rubbish.
- If pre-paid tags are used for wheelie bins, some may get stolen.
- Council needs to account for the procurement of wheelie bins. This cost will need to be recovered either over the life of the bins or the life of the contract.

- Upfront Council establishment and ongoing administration costs as well as the management of the collection services.
- Not a user pays model, Council rates paid regardless of service level required or used.
- No cost incentive to minimise household rubbish disposal within bin size capacity.
- Landlords will pay for their tenant's rubbish collection and may pass this on through an increase in rent.
- Council needs to account for the procurement of wheelie bins. This cost will need to be recovered either over the life of the bins or the life of the contract.
- Illegal dumping may still continue from some sectors of the community.



BULLER
DISTRICT COUNCIL
Te Kaunihera O Kawatiri



Have
your
say!

We are seeking your feedback

The Local Government Act 2002, requires councils to consult with residents and affected parties on significant changes to levels of service.

This means that Council seeks the community's views about the proposed changes to the Zone one rubbish collection through a public consultation before any final decisions are made. Anyone can give feedback on the proposal including individuals, organisations, and businesses.

Community feedback opens Friday, 12 April 2024 and closes at 4.30pm on Monday 20 May 2024. Late submissions will not be considered.

You can give your feedback by:



Online

Completing an online submission form.

<https://www.surveymonkey.com/r/Zone1rubbishcollection>



Hard copy

Complete a hard copy submission form, and return your submission to the mail slot at Council Offices in Brougham Street, Westport or the Reefton Visitor and Service Centre.



Talk to us

Staff are available during drop-in sessions to discuss any aspects of the proposal. You can find dates, times and locations on www.bullerdc.govt.nz.

SCAN ME



TO COMPLETE
THE SUBMISSION
FORM

To find out more

Visit Council's website www.bullerdc.govt.nz/have-your-say/zone-1-rubbish-collection-consultation/